

R&D MARINE



Split Couplings, Adapters & Bobbins

Provides a better fit than a solid coupling

Can accommodate the variations that occur with normal shaft tolerances by clamping onto shaft.

Greater strength and reliability

Machined from solid steel.

Bobbins

Bobbins extend the shaft when necessary.



Easy to install and position

Split couplings are much easier to remove than solid couplings. Save time and money!

Adapters

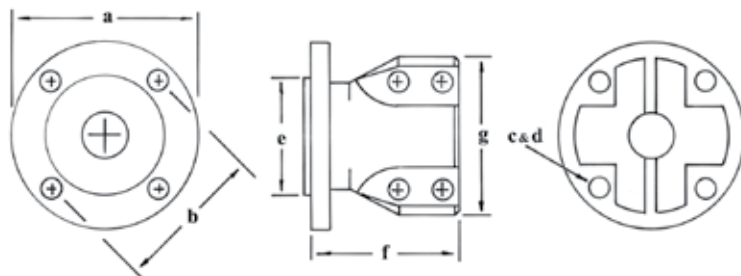
Adapters are available for most gearboxes to allow the fitting of a Flexible Coupling.



(800) 523-7558

www.pyiinc.com

Steel Split Half Couplings



Supplied with Clamp Bolts and Nuts

Imperial Sizes

Keyways to BS46: Part 1 Square

Metric Sizes

Keyways to BS4235: Part 1 Rectangular

Shaded area designates range of bores covered.

Units of measurement: Black Millimetres Red Inches

Part No	Type of Gearbox	Imperial Bore Diameters (Inch)									Coupling Dimensions								
		.750	21mm	1.00	1.250	1.50	1.750	2.00	2.250	2.50	2.750	a	b	c	d	e	f	g	
												Flange Diameter	Hole Pitch Circle	No of Holes	Hole Size	Register Diameter M = Male F = Female	Length	Boss Diameter	
202-153	4" BW, PRM, Hurth Max Bore 1.500	B		B	B	B						102.0 4.00	82.55 3.25	4	10.0 0.394	63.5 2.50	M	81.0 3.19	85.9 3.38
202-254	4" Yanmar Max Bore 1.500	B		B	B							102.0 4.00	78.00 3.07	4	10.0 0.394	50.0 1.97	M	81.0 3.19	85.9 3.38
202-255	4" Volvo Max Bore 1.500	B										102.0 4.00	80.00 3.15	4	10.0 0.394	60.0 2.36	F	85.8 3.28	85.9 3.38
202-489	4" Bukh Max Bore 1.500	B										90.0 3.54	74.5 2.93	4	8.1 0.32	47.0 1.85	F	85.8 3.28	85.9 3.38
202-168	5" BW, PRM, Hurth, Volvo. Max Bore 2.000		P	B	BK	BK	BK	BK				127.0 5.00	107.95 4.25	4	11.2 0.44	63.5 2.50	M	95.3 3.75	103.2 4.06
202-316	5" Yanmar Max Bore 2.000		P		BK							119.9 4.72	100.00 3.94	4	10.0 0.394	65.0 2.56	M	95.3 3.75	103.2 4.06
202-176	6" PRM Max Bore 2.500		P		BK	BK	BK	BK	BK	BK		146.0 5.75	120.6 4.75	6	12.7 0.50	76.2 3.00	M	139.7 5.50	136.7 5.38
202-188	6" Twin Disc Max Bore 2.500		P			BK	BK					146 5.75	120.6 4.75	6	16.0 0.63	76.2 3.00	F	139.7 5.50	136.7 5.38
202-313	5" IRM 220, MG 502 Lister, Max Bore 2.000		P									127.0 5.00	98.6 3.88	6	12.0 0.47	63.5 2.50	F	143.0 5.63	103.2 4.06
202-381	7 ½" PRM 601, 1000 4:1 Max Bore 2.750					P						189.2 7.45	152.4 6.00	6	16.0 0.63	95.25 3.75	M	190.5 7.50	168.4 6.63
202-468	7 ½" PRM 1500 Max Bore 2.750					P						189.2 7.45	152.4 6.00	6	16.0 0.63	95.25 3.75	F	190.5 7.50	168.4 6.63
202-469	7 ½" Twin Disc Max Bore 2.750					P						189.2 7.45	152.4 6.00	6	19.0 0.75	95.25 3.75	F	190.5 7.50	168.4 6.63
202-470	7 ½" ZF 311A Max Bore 2.750					P						189.2 7.45	152.4 6.00	8	16.0 0.63	95.25 3.75	F	190.5 7.50	168.4 6.63

Part No	Type of Gearbox	Metric Bore Diameters (mm)										Coupling Dimensions							
		22	25	30	35	40	45	50	55	60	70	a	b	c	d	e	f	g	
												Flange Diameter	Hole Pitch Circle	No of Holes	Hole Size	Register Diameter M = Male F = Female	Length	Boss Diameter	
202-153	4" BW, PRM, Hurth Max Bore 40mm	B	B	B	B							102.0 4.00	82.55 3.25	4	10.0 0.394	63.5 2.50	M	81.0 3.19	85.9 3.38
202-254	4" Yanmar Max Bore 40mm	B	B	B								102.0 4.00	78.00 3.07	4	10.0 0.394	50.0 1.97	M	81.0 3.19	85.9 3.38
202-255	4" Volvo Max Bore 40mm	B	B	B								102.0 4.00	80.00 3.15	4	10.0 0.394	60.0 2.36	F	85.8 3.28	85.9 3.38
202-489	4" Bukh Max Bore 40mm											90.0 3.54	74.5 2.93	4	8.1 0.32	47.0 1.85	F	85.8 3.28	85.9 3.38
202-168	5" BW, PRM, Hurth Volvo. Max Bore 50mm			BK	BK	BK	BK	BK				127.0 5.00	107.95 4.25	4	11.2 0.44	63.5 2.50	M	95.3 3.75	103.2 4.06
202-316	5" Yanmar Max Bore 50mm			BK	BK							119.9 4.72	100.00 3.94	4	10.0 0.394	65.0 2.56	M	95.3 3.75	103.2 4.06
202-176	6" PRM Max Bore 60mm					BK	BK	BK	BK	BK		146.0 5.75	120.6 4.75	6	12.7 0.50	76.2 3.00	M	139.7 5.50	136.7 5.38
202-188	6" Twin Disc Max Bore 60mm							BK		BK		146 5.75	120.6 4.75	6	16.0 0.63	76.2 3.00	F	139.7 5.50	136.7 5.38
202-313	5" IRM 220, MG 502 Lister, Max Bore 50mm											127.0 5.00	98.6 3.88	6	12.0 0.47	63.5 2.50	F	143.0 5.63	103.2 4.06
202-381	7 ½" PRM 601, 1000 4:1 Max Bore 70mm											189.2 7.45	152.4 6.00	6	16.0 0.63	95.25 3.75	M	190.5 7.50	168.4 6.63
202-468	7 ½" PRM 1500 Max Bore 70mm											189.2 7.45	152.4 6.00	6	16.0 0.63	95.25 3.75	F	190.5 7.50	168.4 6.63
202-469	7 ½" Twin Disc Max Bore 70mm											189.2 7.45	152.4 6.00	6	19.0 0.75	95.25 3.75	F	190.5 7.50	168.4 6.63
202-470	7 ½" ZF 311A Max Bore 70mm											189.2 7.45	152.4 6.00	8	16.0 0.63	95.25 3.75	F	190.5 7.50	168.4 6.63

P - Pilot Drilled Open Tolerance

B - Bored Only

BK - Bored & Keyed

Recommended tightening torque:

M10 - 61 Nm 45 lbf ft

7/16 UNF - 81 Nm 60 lbf ft

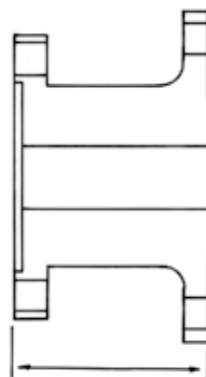
1/2 UNF - 100 Nm 75 lbf ft

5/8 UNF - 210 Nm 155 lbf ft

Gearbox Output Flange Adaptors

R&D Marine can provide an adaptor for most gearboxes to allow the fitting of a flexible coupling from their extensive range. If the gearbox fitting you require is not listed please contact PYI Inc.

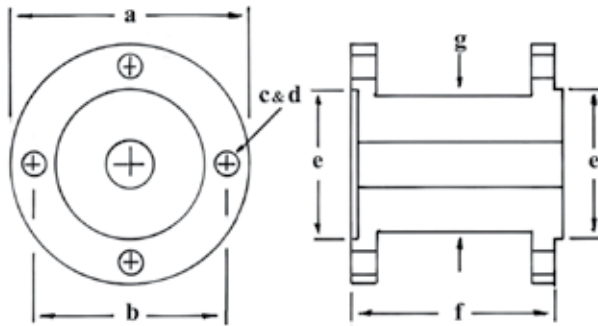
Flange machined to suit the gearbox output flange. The register could be male or female (see listing below).



Flange machined to fit the selected R&D Flexible Coupling. The register could be male or female.

Gearbox	Gearbox Register	Coupling	Maximum HP of Coupling kW HP	Effective length of Coupling Mm Inch	R & D Marine Reference	Effective length of Adaptor Mm Inch
B/W, PRM, ZF-Hurth, Twin Disc, Volvo						
4" to 5"	Female	910-029	14.92 20	52.4 2.06	202-351	22.3 0.88
5" to 6"	Female	910-032	27.6 37	55.4 2.18	202-411	74.7 2.94
Twin Disc						
MG 502	Male	910-032	27.6 37	55.4 2.18	202-148	54 2.13
MG 5075A	Male	910-039	41 55	63.3 2.49	EXP 249	69.9 2.75
MG 5090A	Male	910-024	63.1 85	56.7 2.23	EXP 244	193.7 7.63
MG 5111 SC	Male	910-022	44 65	44.5 1.75	EXP 147	17.8 0.70
MG 5111	Male	910-022	44 65	44.5 1.75	EXP 193	115.9 4.56
MG 5114	Male	910-025	20.9 28	49.8 1.96	EXP 184-2	45 1.75
MG 5114A	Male	910-024	63.1 85	56.7 2.23	EXP 205	155.7 6.13
MG 5114A	Male	910-030	89.52 120	58.4 2.30	EXP 238	155.7 6.13
MG 5135A	Male	910.024	67.5 85	56.7 2.23	202-477	62.5 2.5
MGX 5145 SC	Male	910-025	20.9 28	49.8 1.96	EXP 251	45 1.75
MGX 5145 SC	Male	910-030	89.4 120	58.5 2.30	EXP 253	135 5.32
MGX 5145 SC	Male	910-030	89.4 120	58.5 2.30	EXP 260	159 6.25
MG 6449	Male	910-030	89.4 120	58.5 2.30	EXP 208	46 1.81
ZF-Hurth						
BW 61	Male	910-018	29.84 40	60.7 2.39	EXP 221	122.0 4.81
BW 120	Male	910-025	20.9 28	49.8 1.96	EXP 182	76 3.00
BW 195VP, 1950A 2000, 2050, 2050A	Male	910-035	215 160	108.0 4.25	EXP 242	241.3 9.50
BW 250A 255A, 255AP	Male	910-030	89.52 120	58.4 2.30	EXP 239	155.8 6.13
BW 255 VP	Male	910-045	171.4 230	108.0 4.25	EXP 246	181 7.13
HSW 630 A1	Female	910-025	20.9 28	49.8 1.96	EXP 240	75 2.96
ZF 2000	Male	910-030	89.52 120	58.4 2.30	EXP 247	241 9.50
ZF 2500A	Male	910-030	89.52 120	58.4 2.30	202-412	156 6.13
ZF 2500A	Male	910-035	215 160	108.0 4.25	EXP 266	150 4.25
ZF 550A	Male	910-030	89.52 120	58.4 2.30	EXP 245	124 4.88
IRM 220A	Male	910-032	27.6 37	55.4 2.18	202-384	54 2.13
IRM 280A	Male	910-039	41 55	63.5 2.49	202-382	97 3.82
IRM 280A	Male	910-039	41 55	63.5 2.49	EXP 224 R1	25.4 1.00
IRM 280A	Male	910-039	41 55	63.5 2.49	202-387	50.8 2.00
IRM 305A	Male	910-033	27.6 37	55.4 2.18	EXP 234	115 4.53
IRM 311A	Male	910-039	41 55	63.5 2.49	EXP 230	108 4.25
IRM 311A	Male	910-024	63.1 85	56.7 2.23	EXP 259	266.7 10.50
IRM 311A	Male	910-040	41 55	63.5 2.49	EXP 243	117.6 4.65
IRM 305A	Male	910-040	41 55	63.5 2.49	EXP 261	130.0 5.12
IRM 311-PL	Male	910-024	63.1 85	56.7 2.23	EXP 227	135 5.32
IRM 320A	Male	910-018	29.84 40	60.7 2.39	EXP 130	165.1 6.50
IRM 320AL	Male	910-022	44 65	44.5 1.75	EXP 170	106 4.18
IRM 320A-1	Male	910-024	63.1 85	56.7 2.23	EXP 200	106 4.18
IRM 325A ZF 12 Bolt	Male	910-024	63.1 85	56.7 2.23	202-392	178 7.00
IRM 325 IV	Male	910-039	41 55	63.5 2.49	202-467	111 4.38
IRM 325 IV	Male	910-040	41 55	63.5 2.49	202-474	50.8 2.00
IRM 325A Volvo 10 Bolt	Male	910-024	63.1 85	56.7 2.23	EXP 232	178 7.00
IRM 350A	Male	910-024	63.1 85	56.7 2.23	EXP 177	152.4 6.00
IRM 350A	Male	910-018	63.1 40	60.7 2.39	EXP 207	125 4.92
W350A	Male	910-024	63.1 85	56.7 2.23	202-443	130 5.13

R&D Marine Bobbin (Extension)



R&D Marine can provide a Bobbin to extend the shaft. If the gearbox fitting you require is not listed please contact PYI Inc.

Part No	Type of Gearbox	Bobbin Dimensions						
		a Flange Diameter	b Hole Pitch Circle	c No of Holes	d Hole Size	e Register Diameter	f Length	g Neck Diameter
202-169	4" BW, PRM Hurth	102.0 4.00	82.55 3.25	4	10.0 0.394	63.5 2.50 M/F	87.4 3.44	57.2 2.25
202-251	5" BW, PRM Hurth, Volvo	127.0 5.00	109.95 4.25	4	11.2 0.44	63.5 2.50 M/F	124.5 4.90	85.9 3.38
202-250	6" PRM	146.0 5.75	120.6 4.75	6	12.7 0.50	76.2 3.00 M/F	148.9 5.86	92.7 3.65
Exp 225	7 1/2" Twin Disc	184.2 7.25	152.4 6.00	6	19.0 0.75	95.25 3.75 M/F	152.4 6.00	108.0 4.25

Units of measurement: Black Millimetres Red Inches

R&D by PYI Inc. offers a full line of drive train solutions such as



Engine Mounts • Damper Plates • Flexible Shaft Couplings

Other products by PYI Inc.

