

Exhaust Fittings

C

Transom Exhausts.....	46
Exhaust Collectors - T Type.....	47
Exhaust Collectors - Y Type.....	47
Exhaust Elbow Connections	48
Water Cooled Exhaust Elbows.....	48

In order to ensure proper function of products, it is strongly recommended that each part is inspected and serviced monthly. Inspection should include, but not be limited to, visible damage, excessive wear, and proper bonding. Failure to properly maintain your product may result in catastrophic failure and/or loss of life.

Transom Exhausts

Cast bronze finish or 316 polished stainless steel - Sold each



Part Number Bronze	Part Number Stainless Steel	Hose I. D.	Length Under Flange	Flange O.D.	Flange Angle Deg.	C.S. Screw Size	Weight, lbs.
00te150	70te150	1-1/2"	2-1/2"	3-3/16"	90	1/4"	1.20
00te188	n/a	1-7/8"	2-1/2"	3-1/2"	90	1/4"	1.40
00te200	70te200	2"	2-1/2"	3-5/8"	90	1/4"	1.75
00te250	70te250	2-1/2"	4"	4-1/2"	15	1/4"	3.00
00te300	70te300	3"	5"	5"	8	1/4"	3.90
00te350	n/a	3-1/2"	5"	6-1/2"	8	1/4"	4.80
00te400	70te400	4"	4-3/4"	7"	16	1/4"	6.10
00te500	70te500	5"	5"	7-1/2"	90	1/4"	7.73
00te600	70te600	6"	5"	9-3/4"	90	1/4"	11.40

Bronze Transom Exhaust - w/ Flapper

Cast bronze finish - Sold each



Part Number	Hose I. D.	Length Under Flange	Flange O.D.	Flange Angle Deg.	C.S. Screw Size	Weight, lbs.
00te600f	6"	5"	8"	90	1/4"	15.80

Bronze Flapper Only for Transom Exhaust

Cast bronze finish - Sold each



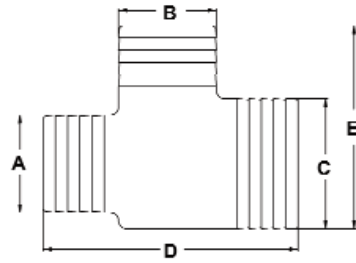
Part Number	Use With Part Numbers
00te600ff	00te600f

Transom Exhausts - Angled Shank

Cast bronze finish or 316 polished stainless steel - Sold each



Part Number Bronze	Part Number Stainless Steel	Hose I. D.	Length Under Flange	Flange O.D.	Hose Shank Angle Deg.	C.S. Screw Size	Weight, lbs.
00tea238	n/a	2-3/8"	5"	4-1/2"	9	1/4"	2.00
00tea400	70tea400	4"	6-1/4"	7"	9	1/4"	8.10
00tea500	n/a	5"	6-1/2"	8"	9	1/4"	8.90
00tea600	n/a	6"	6-1/2"	9"	9	1/4"	12.60
00tea800	n/a	8"	6-1/2"	11-1/2"	9	1/4"	18.40

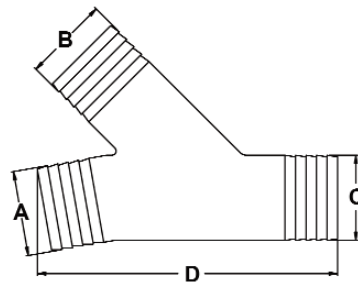


C

Exhaust Collectors - T Type

Powder coated gray iron - Sold each

Part Number	Hose I. D. (A)	Hose I. D. (B)	Hose I. D. (C)	Overall Width (D)	Overall Length (E)	Weight, lbs.
40ec30400b	3"	3"	4"	7-13/16"	6-1/4"	7.50
40ec4040b	4"	4"	4"	9"	6-1/2"	8.80
40ec4050b	4"	4"	5"	9-3/8"	6-1/2"	11.30



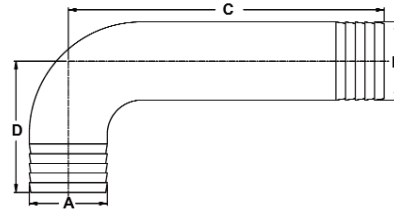
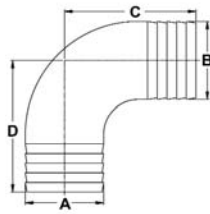
Exhaust Collectors - Y Type

Powder coated gray iron - Sold each

Part Number	Hose I. D. (A)	Hose I. D. (B)	Hose I. D. (C)	Overall Length (D)	Weight, lbs.
40ec250300	2-1/2"	2-1/2"	3"	9-1/2"	6.00
40ec250350	2-1/2"	2-1/2"	3-1/2"	11-1/2"	8.00
40ec250400	2-1/2"	2-1/2"	4"	9-1/2"	8.00
40ec288400	2-7/8"	2-7/8"	4"	9-1/2"	7.00
40ec300300	3"	3"	3"	9-1/2"	7.00
40ec300350	3"	3"	3-1/2"	9-1/2"	8.00
40ec300400	3"	3"	4"	9-1/2"	7.00
40ec300450	3"	3"	4-1/2"	9-1/2"	8.00
40ec300500	3"	3"	5"	9-1/2"	8.00
40ec350500	3-1/2"	3-1/2"	5"	9-1/2"	8.00
40ec400400	4"	4"	4"	12-3/4"	11.20
40ec400500	4"	4"	5"	13-1/4"	18.00

EXHAUST FITTINGS

C



Exhaust Connections - 90 Degree Elbows

Powder coated gray iron - Sold each

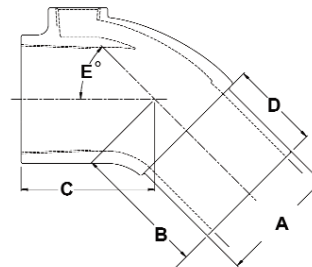
Part Number	Hose I. D. (A)	Hose I. D. (B)	C to E (C)	C to E (D)	Angle Deg.	Weight, lbs.
40ee30300a	3"	3"	11-1/2"	5-1/2"	90	11.00
40ee25090	2-1/2"	2-1/2"	4-1/4"	4-1/4"	90	5.75
40ee30090	3"	3"	4-1/2"	4-1/2"	90	6.00
40ee30090s	3"	3"	3-3/4"	3-3/4"	90	3.00
40ee40090	4"	4"	9"	9"	90	14.00
40ee40090s	4"	4"	5"	5"	90	7.00



Exhaust Connections - Angled

Powder coated gray iron - Sold each

Part Number	Hose I. D. (A)	Hose I. D. (B)	C to E (C)	C to E (D)	Angle Deg.	Weight, lbs.
40ee30045	3"	3"	3"	3"	45	3.00
40ee30060s	3"	3"	3-1/2"	3-1/2"	60	3.00
40ee300120	3"	3"	4-1/4"	4-1/4"	60	5.00
40ee300160	3"	3"	4-1/4"	4-1/4"	20	5.00



Water Cooled Exhaust Elbows

Zinc plated malleable iron - Complete w/ extra heavy close nipple, street elbow, and tufflite hose adapter - Sold complete

Part Number	Hose I. D. (A)	C to E (B)	C to E (C)	Hose End Length (D)	Angle Deg. (E)	Close Nipple Size	Water Injection Hose Size	Weight, lbs.
31ee200	2-3/8"	3"	2"	2"	45	2"-11-1/2	5/8"	4.00
31ee250	3"	3-1/2"	2-1/4"	2-1/4"	45	2-1/2"-8	1/2"	6.00

EXHAUST FITTINGS