

# Drivetrain

**B**

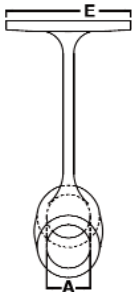
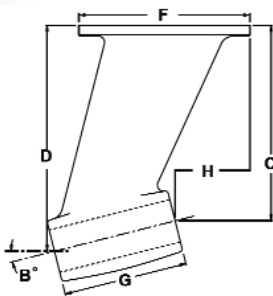
<b>Main Struts.....</b>	<b>18-19</b>	<b>Packing Boxes w/ Gland.....</b>	<b>33-34</b>
<b>Port &amp; Starboard Struts.....</b>	<b>20</b>	<b>Packing Boxes w/ Spud.....</b>	<b>35-37</b>
<b>Vee Struts.....</b>	<b>21</b>	<b>Packing Box Studs.....</b>	<b>38</b>
<b>Intermediate Struts.....</b>	<b>22</b>	<b>Packing Box Wrenches.....</b>	<b>38</b>
<b>Sailboat Struts.....</b>	<b>23</b>	<b>Ski Fins.....</b>	<b>38</b>
<b>Universal Struts.....</b>	<b>23</b>	<b>Thru Hull Style Shaft Logs.....</b>	<b>39</b>
<b>Skeg Strut.....</b>	<b>23</b>	<b>Offset Shaft Logs.....</b>	<b>40</b>
<b>Adjustable Struts.....</b>	<b>24-25</b>	<b>Angled Shaft Logs.....</b>	<b>41</b>
<b>Sleeve Bearings.....</b>	<b>26-27</b>	<b>Oval Base Shaft Logs.....</b>	<b>42</b>
<b>Strut Bolts.....</b>	<b>28</b>	<b>Rectangular Base Shaft Logs.....</b>	<b>42</b>
<b>Albin Stern Bearing Housings.....</b>	<b>29</b>	<b>Square Base Shaft Logs.....</b>	<b>43</b>
<b>Stern Bearing Housings.....</b>	<b>30</b>	<b>Triangular Base Shaft Logs.....</b>	<b>43</b>
<b>Sailboat Shaft Logs.....</b>	<b>31</b>	<b>Shaft Packing.....</b>	<b>44</b>
<b>Stern Tube Packing Boxes.....</b>	<b>31</b>	<b>Packing Extractors.....</b>	<b>44</b>
<b>Packing Boxes w/ Flange.....</b>	<b>32</b>		

*In order to ensure proper function of products, it is strongly recommended that each part is inspected and serviced monthly. Inspection should include, but not be limited to, visible damage, excessive wear, and proper bonding. It is also recommended that a naval engineer is consulted for proper application of hardware. Failure to properly maintain your product may result in catastrophic failure and/or loss of life.*

## Bronze Main Struts

All struts come bored\* to accept a shaft bearing with setscrews installed - Sold each

Part Number	Bore Size (A)	Shaft Ang. (B Deg.)	Fwd. Drop (C)	Aft. Drop (D)	Base Width (E)	Base Len. (F)	Barrel Len. (G)	Offset (H)	Weight, lbs.
ms1 125	1-1/4"	12	5-1/16"	6-3/32"	3-3/8"	5-3/4"	5"	1-5/16"	5.00
ms2 200	2"	12	7-3/4"	8-3/4"	4-5/8"	6-1/4"	5"	1-23/32"	11.00
ms3b2375	2-3/8"	7-1/2	11-3/4"	12-1/2"	8"	8-1/4"	5-5/8"	2-1/8"	30.00
ms4 200	2"	21	5-1/4"	7-1/16"	4-7/8"	6"	4-7/8"	0"	11.00
ms5 200	2"	11	8-31/32"	9-15/16"	7"	7"	5"	7"	19.00
ms6 2375	2-3/8"	10-1/2	10-3/4"	11-25/32"	7-3/4"	8-1/4"	5-5/8"	4-3/32"	29.00
ms7 175	1-3/4"	17	6-3/8"	7-13/16"	6"	9"	4-7/8"	4-3/16"	10.00
ms8 150	1-1/2"	12	6-15/16"	7-15/16"	4"	6"	4-3/4"	5/8"	8.00
ms9 200	2"	14	8-15/16"	10-5/16"	6-1/4"	6-3/4"	5-5/8"	2-7/16"	18.00
ms10 150	1-1/2"	19	5-5/8"	6-29/32"	3-1/4"	5-1/2"	4"	3-3/32"	7.00
ms10x200bh	2"	14	6-7/16"	7-5/8"	5"	6"	5"	1-9/16"	9.00
ms10xL200b	2"	15	7-7/16"	8-11/16"	5"	6"	5"	1-11/16"	10.00
ms10xLw200	2"	14	8-13/32"	9-19/32"	5"	6"	5"	1-3/4"	11.00
ms12 1625	1-5/8"	13	6-13/16"	7-13/16"	4-3/8"	7-1/2"	4-1/2"	2-11/16"	9.00
ms14 150	1-1/2"	11-1/2	6-21/32"	7-1/16"	3-5/16"	5-7/8"	4"	2-1/4"	7.00
ms15 200	2"	13	9-9/16"	10-3/4"	5-3/4"	7"	5-1/4"	-1/16"	22.00
ms15 2375	2-3/8"	13	9-7/32"	10-25/32"	5-3/4"	7"	7"	-1-3/4"	19.00
ms16 200	2"	23	7-7/8"	9-25/32"	6-1/4"	9-1/4"	4-7/8"	2-7/8"	18.00
ms19 150	1-1/2"	15	9-9/16"	10-7/8"	5-3/4"	8"	5"	6-11/16"	15.00
ms20 150	1-1/2"	16-1/2	7-1/2"	8-21/32"	4-7/8"	8"	5"	2-3/8"	14.00
ms21 175	1-3/4"	14-1/2	8-23/32"	10-1/16"	5"	6-5/8"	5"	1-13/16"	13.00
ms22 150	1-1/2"	15	6-1/2"	7-9/16"	3-1/2"	6"	4"	2-1/2"	7.00
ms23 200	2"	11-1/2	12-13/32"	13-7/16"	6"	8-1/2"	5-1/2"	3-3/8"	20.00
ms23 2375	2-3/8"	11	12-1/8"	13-7/16"	6"	8-1/2"	7"	1-7/8"	22.00
ms25 1625	1-5/8"	18-1/2	9-5/8"	10-5/32"	4"	5-3/8"	4-1/4"	1-3/16"	9.00
ms27 1625	1-5/8"	19	5-3/4"	7-3/32"	4"	7"	4"	3-3/16"	8.00
ms28 175	1-3/4"	14	9-31/32"	11-7/32"	5"	8"	5"	3-3/16"	12.00
ms29 150	1-1/2"	16-1/2	8-5/16"	9-13/16"	5"	7"	5"	2-5/8"	13.00
ms30150 bh	1-1/2"	17-1/2	6-15/16"	8-5/32"	5"	7-1/2"	4"	2-9/16"	10.00
ms31 175	1-3/4"	17-1/2	8-11/32"	9-27/32"	5"	8"	5"	3-5/16"	13.00



### Custom Castings:

We also specialize in custom castings. If you can't find the strut you are looking for please find the reference drawings in the back of this catalog, fill in the blanks, and send it back to us by email or fax. We will find a strut that best fits your application or quote you on a custom casting.

\* Shaft bearings and baseholes can be installed upon request.

B

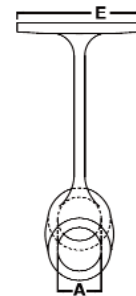
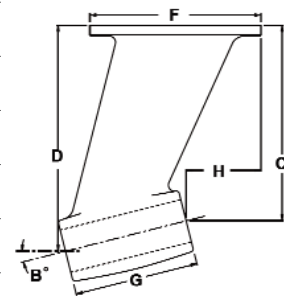
DRIVETRAIN

## Bronze Main Struts

All struts come bored\* to accept a shaft bearing with setscrews installed - Sold each

Part Number	Bore Size (A)	Shaft Ang. (B Deg.)	Fwd. Drop (C)	Aft. Drop (D)	Base Width (E)	Base Len. (F)	Barrel Len. (G)	Offset (H)	Weight, lbs.
ms32 200	2"	10	11-7/16"	12-5/16"	6-1/2"	8"	5"	5-5/16"	20.00
ms33 2375bh	2-3/8"	8-1/2	12-21/32"	13-17/32"	8"	9"	6"	6-7/8"	40.00
ms34 200bh	2"	12	10-29/32"	12-3/64"	6"	8"	5-1/2"	5-1/8"	20.00
ms36 150bh	1-1/2"	33-1/2	6-1/4"	9-1/4"	4"	5"	5-1/4"	5/8"	8.00
ms39 200	2"	11	8-3/4"	9-13/16"	5"	6-7/8"	5-1/2"	9/16"	15.00
ms42 2375	2-3/8"	14	10-31/32"	12-11/32"	7-3/4"	8-1/4"	5-11/16"	4-3/8"	33.00
ms43 2000	2"	15-1/2	8-9/16"	9-15/16"	5-1/4"	10-1/8"	5"	5-5/8"	17.00
ms44 200	2"	12-1/2	8-9/16"	9-11/16"	5"	9-1/4"	5-1/4"	1-1/8"	19.00
ms46 2375	2-3/8"	12	14"	15-1/8"	8"	9-1/2"	5-1/2"	5"	43.00
ms47 2375	2-3/8"	10	14-3/32"	15-3/8"	10"	15-1/2"	7-1/4"	8"	78.00
ms48 3375	3-3/8"	12	16-1/8"	18-3/32"	12"	17"	10"	10-1/4"	192.00
ms49 175	1-3/4"	14	9-5/16"	10-1/2"	5"	7"	5"	2-15/32"	16.00
ms50 175	1-3/4"	14	7-23/32"	9-1/8"	5"	6-7/8"	5"	3"	20.00
ms51 2375	2-3/8"	13	12-5/16"	13-29/32"	7-3/8"	9"	7"	4"	39.00
ms53 175	1-3/4"	19	8"	9-23/32"	4-1/2"	8"	5-1/2"	4-3/16"	15.00
ms54 2625	2-5/8"	15	12"	13-13/16"	6-1/2"	10-1/4"	7-1/8"	3-1/2"	41.00
ms56 1625	1-5/8"	16-1/2	7-3/8"	9-3/16"	3-7/8"	6-1/2"	4-1/2"	-3/8"	10.00
ms57 1625	1-5/8"	18-1/2	7-1/8"	8-7/16"	3-7/8"	5-1/2"	4-1/8"	-1"	14.00
ms59 125	1-1/4"	15	6-11/16"	7-3/4"	3-1/2"	6"	4"	3-1/8"	6.00
ms60 125	1-1/4"	18	5-25/32"	6-31/32"	3-1/2"	6"	3-7/8"	3-1/4"	5.00
ms61 125	1-1/4"	16	6-3/8"	7-17/32"	3-1/2"	6"	4-1/8"	3-1/8"	6.00
ms62 125	1-1/4"	15-1/2	7-9/16"	8-5/16"	4"	6"	4"	2-3/4"	7.00
ms63 175	1-3/4"	11-1/2	8-15/64"	9-7/16"	4-1/2"	8"	5"	4-13/16"	13.00
ms67 2375	2-3/8"	12	3-13/4"	5-1/32"	4-1/4"	6-1/8"	6"	-1/16"	10.00
ms74 175	1-3/4"	14-1/2	10-1/16"	11-5/16"	5-3/4"	11-1/2"	5"	8-9/32"	21.00
ms75 175	1-3/4"	14-1/2	9-7/32"	10-15/32"	5-3/4"	11-1/2"	5"	8-9/32"	15.00
ms76 200	2"	15	9-17/32"	10-27/32"	6"	8"	5"	5-29/32"	22.00
ms77 175	1-3/4"	12-1/2	7-3/4"	8-27/32"	5-1/2"	12-1/8"	5"	9-1/2"	19.00

\* Shaft bearings and baseholes can be installed upon request.



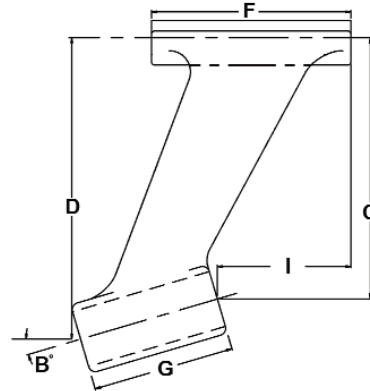
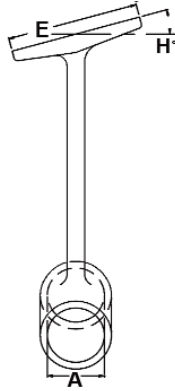
### Custom Castings:

We also specialize in custom castings. If you can't find the strut you are looking for please find the reference drawings in the back of this catalog, fill in the blanks, and send it back to us by email or fax. We will find a strut that best fits your application or quote you on a custom casting.

B

DRIVETRAIN

B



### Bronze Main Struts - Port & Starboard

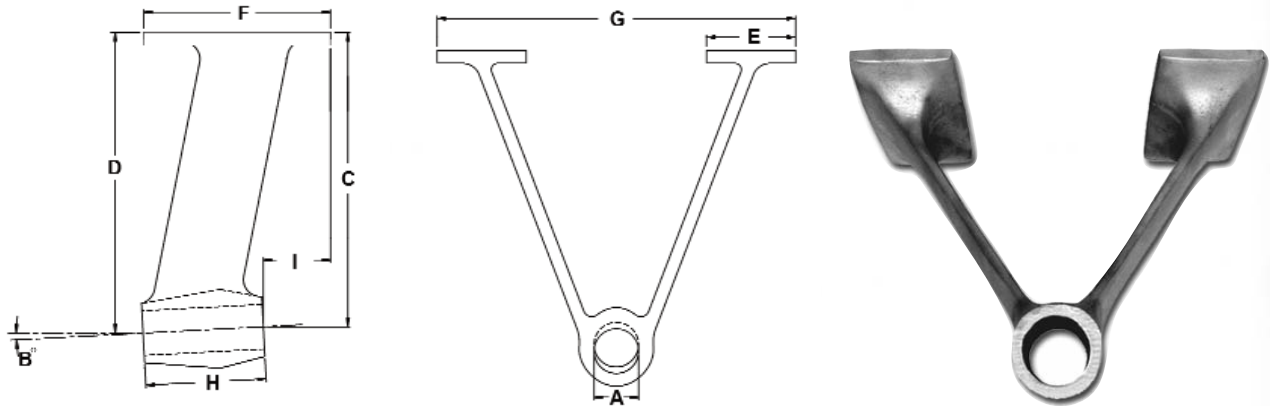
All struts come bored\* to accept a shaft bearing with setscrews installed - Sold each

Part Number Port Side	Part Number Star. Side	Bore Size (A)	Shaft Ang. Fwd. (B Deg.)	Drop (C)	Aft Drop (D)	Base Width (E)	Base Len. (F)	Barrel Len. (G)	Base Ang. (H Deg.)	Offset (I)	Weight, lbs.
ms1p&sport	ms1p&ssstar	1-3/4"	14	8-17/32"	10"	5"	6-3/4"	5"	6-1/4	1-3/16"	11.00
ms4p&sport	ms4p&ssstar	2"	16	9-5/32"	10-9/16"	4-5/8"	7"	5"	15	4-11/16"	14.00
ms5p&sport	ms5p&ssstar	2-3/8"	11-1/2	11-7/32"	12-5/16"	6"	8"	5-1/2"	12	7/8"	22.00
ms6p&sport	ms6p&ssstar	1-3/4"	15	6-7/8"	8-5/32"	4-3/4"	5-7/8"	5"	15	23/32"	10.00
ms7p&sport	ms7p&ssstar	2"	13	10-25/32"	11-15/16"	5"	7"	5"	14	2-5/16"	20.00
ms8p&sport	ms8p&ssstar	1-3/4"	14	8-1/2"	9-3/4"	5"	7"	5-1/8"	16	3"	17.00
ms9p&sport	ms9p&ssstar	2"	13	11-7/32"	12-17/32"	7"	8"	6"	15	3-15/16"	32.00
ms10p&spor	ms10p&sssta	2-5/8"	15	10-7/32"	11-13/16"	6-3/4"	8-3/4"	6"	14-1/2	2-1/2"	31.00
ms15p&spor	ms15p&sssta	2-3/8"	16	9-3/4"	12"	6"	11"	8-1/4"	18	4-1/2"	35.00
ms16p&spor	ms16p&sssta	2-5/8"	15	10-11/16"	12-7/8"	5-7/8"	11"	8-1/4"	14	4-1/4"	33.00
ms17p&spor	ms17p&sssta	2-5/8"	10-1/2	14-7/16"	16-3/32"	7"	12"	9"	16-1/2	4-15/16"	69.00
ms18p&spor	ms18p&sssta	2-3/8"	14-1/2	9-31/32"	11-5/8"	5"	9"	6-9/16"	16-1/2	3-7/16"	23.00
ms19p&spor	ms19p&sssta	3"	13	11-5/8"	13-19/32"	7"	12-1/4"	8-3/4"	13	4-1/2"	48.00
ms20p&spor	ms20p&sssta	2"	13	8-11/32"	9-5/8"	4-7/8"	9"	5-5/8"	17	4-3/8"	14.00
ms22p&spor	ms22p&sssta	3-1/8"	11	14-7/8"	17-1/16"	7"	12-3/16"	11"	16-1/2	5-13/16"	82.00
ms27p&spor	ms27p&sssta	1-1/2"	14	8-5/16"	9-17/32"	6"	6-3/4"	5"	5"	3-13/16"	12.00
ms28p&spor	ms28p&sssta	2"	14	9-3/8"	10-7/8"	6"	9"	6-1/4"	15	4-13/16"	26.00
ms29p&spor	ms29p&sssta	1-1/2"	14	7-3/4"	8-23/32"	4-1/2"	5-9/16"	4"	17	2-13/16"	8.00
ms31p&spor	ms31p&sssta	2-3/8"	14-1/2	10-1/4"	11-5/8"	6"	9-7/16"	5-1/2"	21	7-7/16"	25.00
ms34p&spor	ms34p&sssta	2"	15	6-31/32"	8-1/4"	5"	6"	5"	19	2-1/2"	11.00
ms35p&spor	ms35p&sssta	2"	13-1/2	9-25/32"	11-7/32"	6"	10-25/32"	6"	20	5-15/32"	25.00
ms36p&spor	ms36p&sssta	2-1/2"	15-1/2	8-21/32"	10-25/32"	6"	11"	8"	17-3/4	6-7/8"	36.50

\* Shaft bearings and baseholes can be installed upon request.

#### Custom Castings:

We also specialize in custom castings. If you can't find the strut you are looking for please find the reference drawings in the back of this catalog, fill in the blanks, and send it back to us by email or fax. We will find a strut that best fits your application or quote you on a custom casting.



B

## Bronze Vee Struts

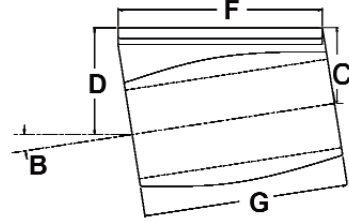
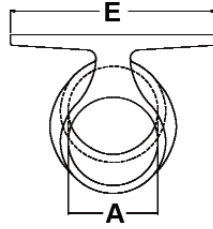
All struts come bored\* to accept a shaft bearing with setscrews installed - Sold each

Part Number	Bore Size (A)	Shaft Ang. (B Deg.)	Fwd. Drop (C)	Aft Drop (D)	Base Width (E)	Base Len. (F)	Outside Pads (G)	Barrel Len. (H)	Offset (I)	Weight, lbs.
vs1 200	2"	12	9"	10-1/4"	3-1/2"	7-5/8"	13-1/4"	6"	1-5/8"	32.00
vs4 2375	2-3/8"	6-1/2	12-5/16"	13-1/4"	4-1/2"	8"	21"	8"	1/4"	53.00
vs4 2625	2-5/8"	6-1/2	12-5/16"	13-1/4"	4-1/2"	8"	21"	8"	1/4"	53.00
vs9 3125	3-1/8"	6	16-5/32"	17-5/32"	6"	10"	24-1/2"	10"	3-1/16"	80.00
vs16 200	2"	14-1/2	10-3/4"	12-1/4"	3"	8-5/8"	17-1/8"	6"	2-1/8"	40.00
vs16 2625	2-5/8"	14-1/2	10-3/4"	12-1/4"	3"	8-5/8"	17-1/8"	6"	2-1/8"	40.00
vs17 2375	2-3/8"	12-1/2	11-5/8"	13-1/8"	5"	8"	20-3/4"	7"	2-11/16"	48.00
vs17x 300	3"	13	12-1/2"	14-1/8"	5-1/8"	8"	21"	7"	2-11/16"	58.00
vs23 2625	2-5/8"	10	13-29/32"	14-31/32"	5-5/8"	9-7/8"	24"	6-1/4"	3-7/8"	54.00
vs27 175	1-3/4"	15	8-31/32"	10-9/32"	3-1/8"	4"	13-3/4"	5"	-3/4"	13.00
vs27x 200	2"	13	6-29/32"	8-1/16"	3-3/16"	4"	13-7/8"	5"	1-1/16"	17.00
vs31 3000	3"	9	16-3/32"	17-9/16"	4"	14"	23-3/4"	9"	2-9/16"	103.00
vs31 3125	3-1/8"	9	16-3/32"	17-9/16"	4"	14"	23-3/4"	9"	2-9/16"	103.00
vs33 2625	2-5/8"	8	16-21/32"	17-25/32"	4-1/8"	8-3/4"	22"	8-3/4"	5/16"	63.00
vs36 200	2"	13	11-5/32"	12-9/32"	2"	6-7/16"	19-1/4"	5"	2-1/16"	15.00
vs37 2125	2-1/8"	8	13-7/16"	14-1/4"	2"	8"	21"	5-1/2"	3-3/8"	23.00
vs39 2625	2-5/8"	11	12-11/32"	13-3/4"	2"	10"	17-1/8"	7"	3-9/16"	35.00
vs51 300	3"	11	14-9/16"	16-5/16"	4"	14"	23-3/4"	9"	2-3/4"	125.00

\* Shaft bearings and baseholes can be installed upon request.

### Custom Castings:

We also specialize in custom castings. If you can't find the strut you are looking for please find the reference drawings in the back of this catalog, fill in the blanks, and send it back to us by email or fax. We will find a strut that best fits your application or quote you on a custom casting.



### Bronze Intermediate Struts - Full Size

All struts come bored\* to accept a shaft bearing with setscrews installed - Sold each



Part Number	Bore Size (A)	Shaft Ang. (B Deg.)	Fwd. Drop (C)	Aft. Drop (D)	Base Width (E)	Base Len. (F)	Barrel Len. (G)	Weight, lbs.
is2 175	1-3/4"	9	4-3/4"	5-5/8"	4-7/8"	6"	5-5/8"	12.00
is3 2375	2-3/8"	11	2-1/8"	3-1/4"	5"	6-1/2"	6"	12.00
is3h 2625	2-5/8"	11	2-9/32"	3-3/8"	5"	6-1/2"	6"	14.00
is4 200	2"	8-1/2	3-29/32"	4-3/4"	5"	6"	5-5/8"	11.00
is5 2125	2-1/8"	11	2-1/4"	3-1/4"	3"	5"	5"	6.00
is10 2625	2-5/8"	7	2-3/8"	3-1/8"	6"	6"	6"	11.00
is11 2625	2-5/8"	9	2-1/4"	3-1/4"	6"	6"	6"	15.00
is12 2625	2-5/8"	7-1/2	2-3/16"	3-1/8"	6-1/2"	7-1/4"	7"	11.00
is13 200	2"	9	4"	4-7/8"	4-1/4"	6-1/8"	5"	8.00
is14 3125	3-1/8"	6	3-31/32"	4-31/32"	8"	12"	9"	39.00
is18 2375	2-3/8"	12	3-3/4"	5-1/16"	4-1/4"	6-1/8"	6"	10.00

\* Shaft bearings and baseholes can be installed upon request.

### Bronze Intermediate Struts - Half Size

All struts come bored\* to accept a shaft bearing with setscrews installed - Sold each

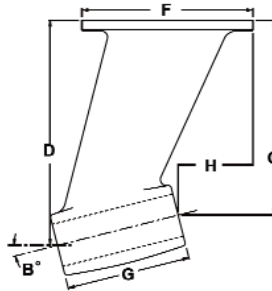
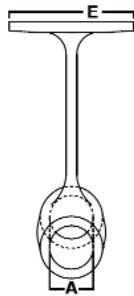


Part Number	Bore Size (A)	Shaft Ang. (B Deg.)	Fwd. Drop (C)	Aft. Drop (D)	Base Width (E)	Base Len. (F)	Barrel Len. (G)	Weight, lbs.
is1x 200	2"	9-1/2	1-5/8"	2-1/8"	2-5/8"	5-7/8"	2-5/8"	4.00
is2x 175	1-3/4"	11	2-1/4"	2-23/32"	3-3/8"	2-7/8"	2-1/2"	4.00
is3x 2375	2-3/8"	12	2-5/8"	3-3/16"	3-1/4"	4"	2-3/4"	6.00
is7x 200	2"	14	1-5/8"	2-7/32"	4-5/8"	3-1/8"	2-7/16"	3.00

\* Shaft bearings and baseholes can be installed upon request.

#### Custom Castings:

We also specialize in custom castings. If you can't find the strut you are looking for please find the reference drawings in the back of this catalog, fill in the blanks, and send it back to us by email or fax. We will find a strut that best fits your application or quote you on a custom casting.



B

### Bronze Sailboat Struts

All struts come bored\* to accept a shaft bearing with setscrews installed - Sold each

Part Number	Bore Size (A)	Shaft Ang. (B Deg.)	Fwd. Drop (C)	Aft. Drop (D)	Base Width (E)	Base Len. (F)	Barrel Len. (G)	Offset (H)	Weight, lbs.
mss1 125	1-1/4"	12	5-7/8"	6-11/16"	3-3/8"	5-1/4"	4"	13/16"	4.30
mss2 125	1-1/4"	18	4-7/8"	6-1/8"	3-1/2"	5-1/2"	4"	3"	4.00
mss3 125	1-1/4"	18-1/2	4-3/4"	6-1/32"	3-3/4"	6-1/2"	4"	2-11/16"	4.00
mss4 125	1-1/4"	20	6-3/8"	7-3/4"	4-1/8"	5-7/8"	4"	2-1/4"	8.00

\* Shaft bearings and baseholes can be installed upon request.

### Bronze Universal Sailboat Struts

All struts come bored\* to accept a shaft bearing with setscrews installed  
Sold each

Part Number	Bore Size	Shaft Angle, Deg.	Barrel Length	Web Width	Overall Length	Weight, lbs.
mssu1125bo	1-1/4"	16	4-1/8"	3-1/2"	16"	10.00
mssu1150bo	1-1/2"	16	4-1/8"	3-1/2"	16"	10.00

\* Shaft bearings and baseholes can be installed upon request.



### Bronze Skeg Strut

All struts come bored\* to accept a shaft bearing with setscrews installed  
Sold each

Part Number	Bore Size	Shaft Angle, Deg.	Forward Drop	Aft Drop	Base Width	Base Length	Barrel Length	Overall Length	Offset	Weight, lbs.
10ss12	2-3/8"	14-1/2	10-1/8"	11-7/8"	6"	7-3/4"	7"	25-1/2"	2-13/16"	5.00

\* Shaft bearings and baseholes can be installed upon request.



### Custom Castings:

We also specialize in custom castings. If you can't find the strut you are looking for please find the reference drawings in the back of this catalog, fill in the blanks, and send it back to us by email or fax. We will find a strut that best fits your application or quote you on a custom casting.

B



### Bronze Adjustable Struts - Swivel Type

All struts come bored\* to accept a shaft bearing and come complete w/ bolts, nuts & setscrews installed - Sold each

Part Number	Bore Size	Max Drop	Base Width	Base Length	Barrel Length	Weight, lbs.
as1 150	1-1/2"	5-5/8"	3"	5-1/2"	4"	6.00
as1 175	1-3/4"	5-5/8"	3"	5-1/2"	4"	6.00
as2 150	1-1/2"	7-13/16"	3-1/2"	6-1/2"	5"	11.00
as2 175	1-3/4"	7-13/16"	3-1/2"	6-1/2"	5"	11.00
as2x 150	1-1/2"	9-3/8"	3-1/2"	6-1/2"	5"	12.00
as2x 175	1-3/4"	9-3/8"	3-1/2"	6-1/2"	5"	12.00

\* Shaft bearings and baseholes can be installed upon request.

### Replacement Parts for Adjustable Struts - Swivel Type

#### Bases - Sold each

Part Number	Use With Part Numbers
as1 base	as1 150 & as1 175
as2 base	as2 150, as2 175, as2x 150 & as2x 175

#### Barrels - Sold each

Part Number	Use With Part Numbers
as1barr 150	as1 150
as1barr 175	as1 175
as2barr 150	as2 150
as2barr 175	as2 175
as2xbarr 150	as2x 150
as2xbarr 175	as2x 175



### Bronze Adjustable Strut - Cut-Off Type

All struts come bored\* to accept a shaft bearing and come complete w/ bolts, nuts & setscrews installed - Sold each

Part Number	Bore Size	Max Drop	Base Width	Base Length	Barrel Length	Weight, lbs.
as5 150	1-1/2"	7"	3-1/4"	5-7/16"	5"	9.00

\* Shaft bearings and baseholes can be installed upon request.

### Replacement Parts for Adjustable Strut - Cut-Off Type

#### Base - Sold each

Part Number	Use With Part Number
as5 base	as5 150

#### Barrel - Sold each

Part Number	Use With Part Number
as5barr 150	as5 150

#### Custom Castings:

We also specialize in custom castings. If you can't find the strut you are looking for please find the reference drawings in the back of this catalog, fill in the blanks, and send it back to us by email or fax. We will find a strut that best fits your application or quote you on a custom casting.



### Bronze Adjustable Strut - Cut-Off Type

All struts come bored\* to accept a shaft bearing and come complete w/ bolts, nuts & setscrews installed - Sold each

Part Number	Bore Size	Max Drop	Base Width	Base Length	Barrel Length	Weight, lbs.
as3 200	2"	13-3/4"	5"	6"	5"	5.00

\* Shaft bearings and baseholes can be installed upon request.



B

### Replacement Parts for Adjustable Strut - Cut-Off Type

#### Base - Sold each

Part Number	Use With Part Numbers
as3 base	as3 200 & as3x 200

#### Barrel - Sold each

Part Number	Use With Part Numbers
as3barr 200	as3 200

### Bronze Adjustable Skeg Strut - Cut-Off Type

All struts come bored\* to accept a shaft bearing and come complete w/ bolts, nuts & setscrews installed - Sold each

Part Number	Bore Size	Max Drop	Base Width	Base Length	Barrel Length	Foot Size W x L	Weight, lbs.
as4 200	2"	13-3/4"	5"	6"	6"	2-7/16" x 7"	20.00

\* Shaft bearings and base holes can be installed upon request.



### Replacement Parts for Adjustable Strut - Cut-Off Type

#### Base - Sold each

Part Number	Use With Part Number
as3 base	as4 200

#### Barrel - Sold each

Part Number	Use With Part Number
as4barr 200	as4 200

#### Foot - Sold each

Part Number	Use With Part Number
as4 foot	as4 200

#### Custom Castings:

We also specialize in custom castings. If you can't find the strut you are looking for please find the reference drawings in the back of this catalog, fill in the blanks, and send it back to us by email or fax. We will find a strut that best fits your application or quote you on a custom casting.

**B**

**Bronze Strut Bolts - Carriage Bolts - Sold each**

Part Number	Thread Size	Length Under Head
car031x550cb	5/16"-18	5"
car037x550cb	3/8"-16	5-1/2"

Part Number	Thread Size	Length Under Head
car050x550cb	1/2"-13	5-1/2"
car062x550cb	5/8"-11	5-1/2"

*Other sizes may be available upon request.*


**Bronze Strut Bolts - Flat Head Hex Socket - Sold each**

Part Number	Thread Size	Length Under Head
fLhd031x550sh	5/16"-18	5-1/2"
fLhd037x550sh	3/8"-16	5-1/2"

Part Number	Thread Size	Length Under Head
fLhd050x550sh	1/2"-13	5-1/2"
fLhd062x550sh	5/8"-11	5-1/2"

*Other sizes may be available upon request.*


**Bronze Strut Bolts - Oval Head Slotted - Sold each**

Part Number	Thread Size	Length Under Head
ovhd031x550oh	5/16"-18	5-1/2"
ovhd037x550oh	3/8"-16	5-1/2"

Part Number	Thread Size	Length Under Head
ovhd050x550oh	1/2"-13	5-1/2"
ovhd062x550oh	5/8"-11	5-1/2"

*Other sizes may be available upon request.*


**Hexnuts - Sold each**

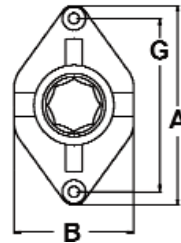
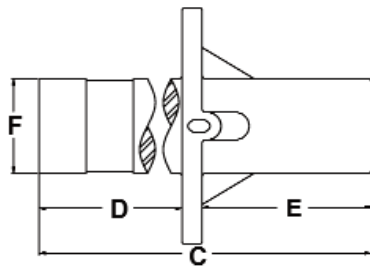
Part Number	Thread Size
hexnut031	5/16"-18
hexnut375	3/8"-16
hexnut050	1/2"-13
hexnut625	5/8"-11

*Locknuts are available upon request.*

**Flatwashers - Sold each**

Part Number	Size
flatwasher031	5/16"
flatwasher375	3/8"
flatwasher050	1/2"
flatwasher625	5/8"

*Lockwashers are available upon request.*

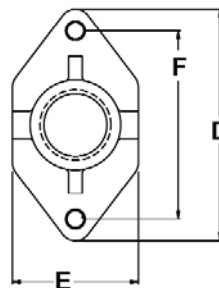
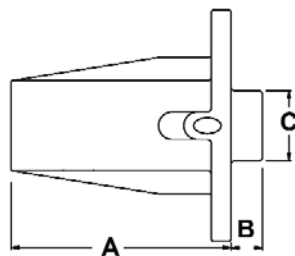

**B**

### Albin Bronze Stern Bearing Housings w/ Tube - Oval Flange

All Albin stern castings come complete w/ a shaft bearing and two setscrews installed - Sold each

Part Number	Shaft Size	Bore Size	A	B	C	D	E	F	G	Bolthole Size	Weight, lbs.
<b>m24115*</b>	1-3/4"	2-5/8"	7-1/2"	4-1/2"	9"	4-3/4"	3-5/8"	3"	6-1/2"	1/2"	11.00
<b>m24127*</b>	1-3/4"	2-5/8"	7-1/2"	4-1/2"	18-3/4"	14"	3-5/8"	3"	6-1/2"	1/2"	17.30
<b>m24131*</b>	1-3/4"	2-5/8"	7-1/2"	4-1/2"	25-1/4"	21"	3-5/8"	3"	6-1/2"	1/2"	26.00

\* 2" shaft size is available upon request.

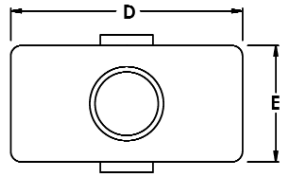
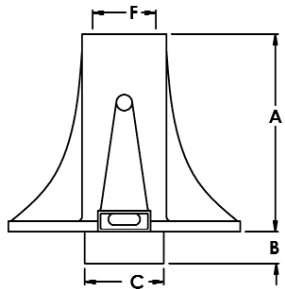
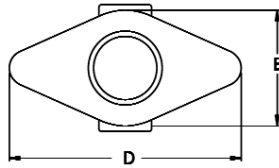


### Albin Bronze Stern Bearing Housings - Oval Flange

All Albin stern castings come complete w/ a shaft bearing and two setscrews installed - Sold each

Part Number	Shaft Size	Bore Size	A	B	C	D	E	F	Bolthole Size	Weight, lbs.
<b>m24034*</b>	1-1/2"	2-5/8"	4-1/2"	1"	2-1/4"	7-3/8"	3-5/8"	6"	1/2"	15.00

\* 1-1/4" shaft size is available upon request.

**B**


### Bronze Stern Bearing Housings - Oval Flange

All housings come bored\* to accept a shaft bearing and are internally threaded - Complete w/ two setscrews - Sold each

Part Number	Shaft Size	A	B	C	D	E	F	Thread Size (NPSM)	Weight, lbs.
00stbo88	7/8"	4"	1/2"	1-15/16"	4-3/4"	2-3/8"	1-1/2"	None	2.40
00stbo100	1"	4-9/16"	1/2"	2"	5"	2-3/8"	1-5/8"	1-1/4" - 11-1/2"	3.50
00stbo113	1-1/8"	4-9/16"	1/2"	2"	5"	2-3/8"	1-5/8"	1-1/4" - 11-1/2"	3.50
00stbo125	1-1/4"	5-5/8"	7/8"	2-3/8"	6"	3"	2"	1-1/2" - 11-1/2"	5.00
00stbo138	1-3/8"	5-5/8"	7/8"	2-3/8"	6"	3"	2"	1-1/2" - 11-1/2"	5.00
00stbo150	1-1/2"	5-5/8"	7/8"	2-3/8"	6"	3"	2"	1-1/2" - 11-1/2"	5.00

\* Shaft bearings and flange holes can be installed upon request.

### Bronze Stern Bearing Housings - Rectangular Flange

All housings come bored\* to accept a shaft bearing and are internally threaded - Complete w/ two setscrews - Sold each

Part Number	Shaft Size	A	B	C	D	E	F	Thread Size (NPSM)	Weight, lbs.
00stbr138	1-3/8"	6-7/8"	1"	2-7/8"	7"	3-1/2"	2-3/8"	2" - 11-1/2"	12.50
00stbr150	1-1/2"	6-7/8"	1"	2-7/8"	7"	3-1/2"	2-3/8"	2" - 11-1/2"	12.50
00stbr175	1-3/4"	7-7/8"	1-1/8"	3-3/8"	8"	4"	2-5/8"	2-1/2" - 8"	17.00
00stbr200	2"	8-7/8"	1-1/4"	3-5/8"	9-1/4"	4-5/8"	3"	2-1/2" - 8"	22.00
00stbr225	2-1/4"	8-7/8"	1-1/4"	3-5/8"	9-1/4"	4-5/8"	3-1/8"	2-1/2" - 8"	22.00
00stbr250	2-1/2"	11"	1-5/8"	4-1/16"	11-1/2"	5-3/4"	3-3/8"	3" - 8"	31.50
00stbr275	2-3/4"	11"	1-5/8"	4"	11-1/2"	5-3/4"	3-3/8"	3" - 8"	31.50
00stbr300	3"	13"	2"	4-7/8"	14"	7"	3-3/4"	None	57.50

\* Shaft bearings and flange holes can be installed upon request.

**TOURNAMENT  
MARINE PRODUCTS**

**Bronze Stern Bearing Housing - Oval Flange** - Comes bored\* to accept a shaft bearing - Complete w/ two setscrews - Sold each

Part Number	Shaft Size	A	B	C	D	E	F	Weight, lbs.
10122	1-3/8"	6-3/16"	7/8"	2-3/8"	6-1/2"	3"	2-1/8"	6.00

\* Shaft bearings and flange holes can be installed upon request.

**TOURNAMENT  
MARINE PRODUCTS**

**Bronze Stern Bearing Housings - Rectangular Flange**

All housings come bored\* to accept a shaft bearing - Complete w/ two setscrews  
Sold each

Part Number	Shaft Size	A	B	C	D	E	F	Weight, lbs.
10020	1-1/4"	5-3/8"	7/8"	2-3/8"	5-3/4"	3"	2"	6.20
10022	1-3/8"	6-3/16"	1"	2-1/2"	6-1/2"	3-1/4"	2"	7.20

\* Shaft bearings and flange holes can be installed upon request.

**Bronze Sailboat Shaft Log Bearing Housing** - Come bored\* to accept a shaft bearing - Complete w/ two setscrews Sold each

Part Number	Bore Size	Hose I. D.	Length Below Flange	Length Above Flange	Flange Dimension	Weight, lbs.
10sLc100L	1-1/2"	1-3/4"	9"	2"	2-1/2" x 4"	5.00

\* Shaft bearings and flange holes can be installed upon request.

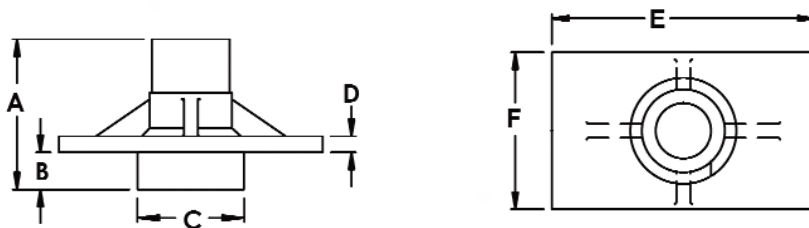


B

**Bronze Sailboat Shaft Log Bearing Housing** - Comes bored\* to accept a shaft bearing - Complete w/ two setscrews Sold each

Part Number	Bore Size	Hose I. D.	Length Below Flange	Length Above Flange	Flange Dimension	Weight, lbs.
10sLw1002	1-1/2"	2"	4-5/8"	1-1/2"	2-7/8" x 5"	3.75

\* Shaft bearings and flange holes can be installed upon request.



### Stern Tube Packing Boxes

All stern tube packing boxes are internally threaded - Complete w/ lock nut and packing spud - Sold each

Part Number	Shaft Size	Packing Size	A	B	C	D	E	F	Internal Thread Size (NPSM)	Weight, lbs.
00stpb125	1-1/4"	1/4"	4-5/8"	1-9/16"	2-1/2"	5/16"	5-3/8"	3-1/2"	1-1/2" -11-1/2	5.75
00stpb138	1-3/8"	5/16"	4-5/8"	1-9/16"	2-1/2"	5/16"	5-3/8"	3-1/2"	1-1/2" -11-1/2	5.60
00stpb150	1-1/2"	1/4"	4"	1"	2-7/8"	1/2"	7-1/8"	4-1/4"	2" - 11-1/2	7.60
00stpb175	1-3/4"	1/2"	5-1/2"	1"	3-3/8"	1/2"	8-1/2"	5-1/4"	2-1/2" - 8	15.75
00stpb200	2"	3/8"	5-1/2"	1"	3-3/8"	1/2"	8-1/2"	5-1/4"	2-1/2" - 8	14.10
00stpb225	2-1/4"	7/16"	5-3/4"	1"	3-3/8"	5/8"	8-1/2"	5-1/4"	2-1/2" - 8	18.85
00stpb250	2-1/2"	5/16"	5-15/16"	1"	4-1/16"	5/8"	8-1/2"	5-1/4"	3" - 8	18.00

### Replacement Parts for Stern Tube Packing Boxes

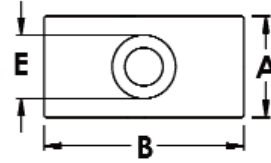
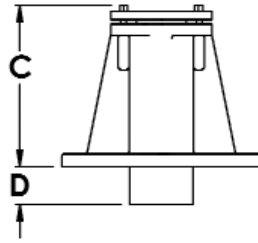
#### Packing Spuds - Sold each

Part Number	Use With Part Numbers
00125pbs	00stpb125
00125pbs38	00stpb138
00150pbs	00stpb150
00175pbs	00stpb175
00200pbs	00stpb200
00225pbs	00stpb225
00250pbs	00stpb250

#### Lock Nuts - Sold each

Part Number	Use With Part Numbers
00125pbn	00stpb125 & 00stpb138
00138pbn	00stpb150
00175pbn	00stpb175 & 00stpb200
00225pbn	00stpb225 & 00stpb250

B



**TOURNAMENT MARINE PRODUCTS** **Bronze Packing Boxes - Rectangular Flange**

Complete w/ a packing gland & two nuts for each stud - Sold each

Part Number	Shaft Size	Packing Size	A	B	C	D	E	Weight, lbs.
10220	1-1/4"	1/4"	3-5/16"	6-5/8"	4-7/8"	1-3/8"	2-3/16"	9.20
10222	1-3/8"	1/4"	3-5/8"	7-1/4"	5-1/4"	1-1/2"	2-5/16"	10.20
10224	1-1/2"	1/4"	4"	8"	6-1/16"	1-5/8"	2-7/16"	14.00
10228	1-3/4"	3/8"	4-5/8"	9-1/4"	7-1/16"	1-7/8"	3-1/16"	18.70
10232	2"	3/8"	5-1/4"	10-1/2"	7-13/16"	2-1/8"	3-5/16"	23.90
10236	2-1/4"	1/2"	6"	12"	8-3/4"	2-7/16"	3-5/16"	34.10
10240	2-1/2"	1/2"	6-5/8"	13-1/4"	9-11/16"	2-3/4"	4-3/16"	56.00

**Bronze Packing Boxes - Rectangular Flange**

Complete w/ a packing gland & two nuts for each stud - Sold each

Part Number	Shaft Size	Packing Size	A	B	C	D	E	Weight, lbs.
00pb300gf	3"	3/8"	8"	17"	13"	3-1/4"	4-13/16"	89.00

**Replacement Parts for Packing Boxes - Rectangular Flange**

**Packing Glands\***

Sold each



Part Number	Use With Part Numbers
10220g	10220
10222g	10222
10224g	10224
10228g	10228
10232g	10232
10236g	10236
10240g	10240
00pb300gfg	00pb300gf

**Packing Box Studs**

Complete w/ two nuts per stud - Sold in pairs



Part Number	Use With Part Numbers
studs	10220, 10222, 10224 & 10228
studs62	10232, 10236, 10240 & 00pb300gf

\* Stud holes can be drilled upon request

## Bronze Packing Boxes - Self Aligning - Gland Type

Complete w/ hose, four clamps, a packing gland & two nuts for each stud - Sold complete

Part Number	Shaft Size	Hose I. D.	Packing Size	Weight, lbs.
00pb125g	1-1/4"	2-1/4"	1/4"	4.00
00pb138g	1-3/8"	2-1/2"	3/8"	4.00
00pb150g	1-1/2"	2-1/2"	1/4"	4.00
00pb175g	1-3/4"	3"	3/8"	8.50
00pb200g	2"	3"	1/4"	8.50
00pb225g	2-1/4"	3-1/2"	3/8"	11.00
00pb250g	2-1/2"	3-1/2"	1/4"	11.00



B

## Bronze Heavy Duty Packing Boxes - Self Aligning - Gland Type

Complete w/ hose, four clamps, a packing gland & two nuts for each stud  
Sold complete

Part Number	Shaft Size	Hose I. D.	Packing Size	Weight, lbs.
00pb200gh	2"	3-1/2"	1/2"	22.00
00pb225gh	2-1/4"	3-1/2"	3/8"	22.00
00pb250gh	2-1/2"	3-1/2"	1/4"	22.00
00pb250ghn	2-1/2"	4"	1/4"	25.00
00pb275gh	2-3/4"	4"	1/2"	31.00
00pb300gh	3"	4"	3/8"	31.00
00pb300gh45	3"	4-1/2"	3/8"	31.00

## Replacement Parts for Packing Boxes - Self Aligning - Gland Type

### Packing Box Studs

Complete w/ two nuts per stud - Sold in pairs

Part Number	Use With Part Numbers
studs37	00pb125g, 00pb138g & 00pb150g
studs	00pb175g, 00pb200g, 00pb225g & 00pb250g
studs62	00pb200gh, 00pb250gh, 00pb250ghn, 00pb225gh, 00pb275gh, 00pb300gh & 00pb300gh45

### Clamps - Sold each

Part Number	Use With Part Numbers
70hss44c	00pb125g
70stbc325	00pb138g & 00pb150g
70stbc375	00pb175g & 00pb200g
70stbc425	00pb225g, 00pb250g, 00pb200gh, 00pb225gh & 00pb250gh
70stbc475	00pb250ghn, 00pb275gh & 00pb300gh
70stbc525	00pb300gh45

### Hoses - Sold each

Part Number	Use With Part Numbers
80ho225	00pb125g
80ho250	00pb138g & 00pb150g
80ho300	00pb175g & 00pb200g
80ho350	00pb225g, 00pb250g, 00pb200gh, 00pb250gh & 00pb225gh
80ho400	00pb250ghn, 00pb275gh & 00pb300gh
80ho450	00pb300gh45

### Packing Glands\* - Sold each

Part Number	Use With Part Numbers
00pb125gg	00pb125g
00pb138gg	00pb138g
00pb150gg	00pb150g
00pb175gg	00pb175g
00pb200gg	00pb200g
00pb225gg	00pb225g
00pb250gg	00pb250g
00pb200ghg	00pb200gh
00pb225ghg	00pb225gh
00pb250ghg	00pb250gh & 00pb250ghn
00275pbggh	00pb275gh
00pb300gfg	00pb300gh & 00pb300gh45

\* Stud holes can be drilled upon request

DRIVETRAIN

B



**TOURNAMENT MARINE PRODUCTS**

**Bronze Packing Boxes - Self Aligning - Gland Type**

Complete w/ hose, four clamps, a packing gland & two nuts for each stud - Sold complete

Part Number	Shaft Size	Hose I. D.	Packing Size	Weight, lbs.
1553	1-3/4"	3-1/2"	3/8"	8.80
1554	2"	3-1/2"	1/4"	8.80

**Replacement Parts for Packing Boxes - Self Aligning - Gland Type**

**Packing Glands\*** - Sold each

Part Number	Use With Part Numbers
1553g	1553
1554g	1554

\* Stud holes can be drilled upon request

**Packing Box Studs** - Complete w/ two nuts per stud - Sold in pairs

Part Number	Use With Part Numbers
studs	1553 & 1554

**Clamps** - Sold each

Part Number	Use With Part Numbers
70stbc425	1553 & 1554

**Hose** - Sold each

Part Number	Use With Part Numbers
80ho350	1553 & 1554

DRIVETRAIN



**Bronze Packing Boxes - Self Aligning - Gland Type**

Complete w/ hose, four clamps, a packing gland & two nuts for each stud - Sold complete

Part Number	Shaft Size	Hose I. D.	Packing Size	Weight, lbs.
00pbs125g	1-1/4"	2"	3/16"	3.00
00pbs138g	1-3/8"	2-5/8"	1/4"	4.00
00pbs150g	1-1/2"	2-5/8"	5/16"	4.00

**Replacement Parts for Packing Boxes - Self Aligning - Gland Type**

**Packing Glands\*** - Sold each

Part Number	Use With Part Numbers
sipb125gLd	00pbs125g
sipb138gLd	00pbs138g
sipb150gLd	00pbs150g

\* Stud holes can be drilled upon request

**Packing Box Studs** - Complete w/ two nuts per stud - Sold in pairs

Part Number	Use With Part Numbers
studs37	00pbs125g, 00pbs138g & 00pbs150g

**Clamps** - Sold each

Part Number	Use With Part Numbers
70stbc256	00pbs125g
70stbc312	00pbs138g & 00pbs150g

**Hoses** - Sold each

Part Number	Use With Part Numbers
sipb125hos	00pbs125g
sipb138hos	00pbs138g & 00pbs150g



**TOURNAMENT MARINE PRODUCTS** **Bronze Water Cooled Packing Boxes - Self Aligning - Spud Type**

Complete w/ hose, four clamps, hose adapter, packing nut & lock nut - Sold complete

Part Number	Shaft Size	Hose I. D.	Water Injection	Packing Size	Weight, lbs.
8413225	1-3/8"	2-1/4"	1/2"	7/16"	15.50
8413250	1-3/8"	2-1/2"	1/2"	7/16"	15.75
8413300	1-3/8"	3"	1/2"	7/16"	16.00
8415225	1-1/2"	2-1/4"	1/2"	3/8"	15.25
8415250	1-1/2"	2-1/2"	1/2"	3/8"	15.50
8415300	1-1/2"	3"	1/2"	3/8"	15.75
8417300	1-3/4"	3"	1/2"	1/2"	15.50
8417350	1-3/4"	3-1/2"	1/2"	1/2"	27.00
8420300	2"	3"	1/2"	3/8"	15.25
8420350	2"	3-1/2"	1/2"	3/8"	26.50
8422400	2-1/4"	4"	1/2"	7/16"	30.00
8425400	2-1/2"	4"	1/2"	5/16"	28.00
8430450	3"	4-1/2"	1/2"	5/16"	40.00



B

**Replacement Parts for Water Cooled Packing Boxes**

**Packing Spuds - Sold each**

Part Number	Use With Part Numbers
82138s	8413225, 8413250 & 8413300
82150s	8415225, 8415250 & 8415300
82175s	8417300 & 8417350
82200s	8420300 & 8420350
8422400s	8422400
842250s	8425400
8430450s	8430450

**Lock Nuts - Sold each**

Part Number	Use With Part Numbers
82138n	8413225, 8413250, 8413300, 8415225, 8415250 & 8415300,
00175pbn	8417300, 8417350, 8420300 & 8420350
00225pbn	8422400, 8425400,
00300pbn	8430450

**Clamps - Sold each**

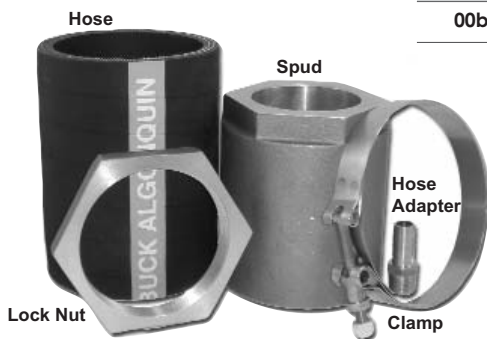
Part Number	Use With Part Numbers
70stbc300	8413225, 8415225
70stbc325	8413250, 8415250
70stbc375	8413300, 8415300, 8417300 & 8420300
70stbc425	8417350, 8420350
70stbc475	8422400, 8425400
70stbc532L	8430450

**Hose Adapter - Sold each**

Part Number	Use With Part Numbers
00bn43	all of the above

**Hoses - Sold each**

Part Number	Use With Part Numbers
80ho225	8413225, 8415225
80ho250	8413250, 8415250
80ho300	8413300, 8415300, 8417300 & 8420300
80ho350	8417350, 8420350
80ho400	8422400, 8425400
80ho450	8430450



DRIVETRAIN

B



**Bronze Packing Boxes - Self Aligning - Spud Type - Right Hand Thread**  
 Complete w/ hose, four s/s clamps, packing nut & lock nut - Sold complete

Part Number	Shaft Size	Hose I. D.	Packing Size	Weight, lbs.
00pb75	3/4"	1-1/2"	3/8"	1.75
00pb88	7/8"	1-3/4"	5/16"	1.75
00pb100x	1"	1-1/2"	1/4"	1.75
00pb100	1"	1-3/4"	1/4"	1.75
00pb100fg	1"	2"	1/4"	1.90
00pb100225	1"	2-1/4"	1/4"	2.30
00pb113	1-1/8"	1-3/4"	3/16"	1.75
00pb113fg	1-1/8"	2"	3/16"	1.90
00pb113h	1-1/8"	2-1/4"	3/16"	2.80
00pb125175	1-1/4"	1-3/4"	1/4"	2.75
00pb125fg	1-1/4"	2"	1/4"	2.30
00pb125	1-1/4"	2-1/4"	1/4"	2.85
00pb138	1-3/8"	2-1/2"	5/16"	3.35
00pb15225	1-1/2"	2-1/4"	1/4"	3.80
00pb150	1-1/2"	2-1/2"	1/4"	3.35
jpb175	1-3/4"	2-1/2"	3/8"	5.70
00pb175	1-3/4"	3"	1/2"	8.00
00pb175L	1-3/4"	3-1/2"	1/2"	9.00
00pb200	2"	3"	3/8"	8.00
00pb200L	2"	3-1/2"	3/8"	9.00
00pb225	2-1/4"	3-1/2"	7/16"	12.00
00pb250	2-1/2"	3-1/2"	5/16"	12.00
00pb300	3"	4-1/2"	9/16"	30.00

See page 37 for replacement parts.

**Bronze Packing Boxes - Self Aligning - Spud Type - Left Hand Thread**  
 Complete w/ hose, four clamps, packing nut & lock nut - Sold complete

Part Number	Shaft Size	Hose I. D.	Packing Size	Weight, lbs.
00pb113Lh	1-1/8"	1-3/4"	3/16"	1.75
00pb125Lh	1-1/4"	2-1/4"	1/4"	2.85
00pb150Lh	1-1/2"	2-1/2"	1/4"	3.35
00pb175Lh	1-3/4"	3"	1/2"	8.00
00pb200Lh	2"	3"	3/8"	8.00
00pb225Lh	2-1/4"	3-1/2"	7/16"	12.00
00pb250Lh	2-1/2"	3-1/2"	5/16"	12.00

See page 37 for replacement parts.

DRIVETRAIN

## Replacement Parts for Packing Boxes - Spud Type

### Packing Spuds - Sold each

Part Number	Use With Part Numbers
0075pbs	00pb75
0088pbs	00pb88
00100pbs	00pb100x, 00pb100, 00pb100fg & 00pb100225
00113pbs	00pb113, 00pb113fg & 00pb113h
00125pbs	00pb125175, 00pb125fg, & 00pb125
00138pbs	00pb138
00150pbs	00pb15225, 00pb150
00175pbsoy	jpbp175
00175pbs	00pb175 & 00pb175L
00200pbs	00pb200, 00pb200L
00225pbs	00pb225
00250pbs	00pb250
00300pbs	00pb300
00125pbsL	00pb125Lh
3059pbs	00pb113Lh
00150pbsLh	00pb150Lh
00175pbsLh	00pb175Lh
00200pbsLh	00pb200Lh
00225pbsLh	00pb225Lh
00250pbsLh	00pb250Lh

### Hoses - Sold each

Part Number	Use With Part Numbers
80ho150	00pb75, 00pb100x
80ho175	00pb88, 00pb100, 00pb113, 00pb125175, 00pb113Lh
80ho200	00pb100fg, 00pb113fg, 00pb125fg
80ho225	00pb100225, 00pb113h, 00pb125, 00pb15225, 00pb125Lh
80ho250	00pb138, 00pb150, jpb175, 00pb150Lh
80ho300	00pb175, 00pb200, 00pb175Lh, 00pb200Lh
80ho350	00pb175L, 00pb200L, 00pb225, 00pb250, 00pb225Lh, 00pb250Lh
80ho450	00pb300



### Lock Nuts - Sold each

Part Number	Use With Part Numbers
00100pbn	00pb75, 00pb88, 00pb100x, 00pb100, 00pb100fg, 00pb100225, 00pb113, 00pb113fg & 00pb113h
00125pbn	00pb125175, 00pb125fg & 00pb125,
00138pbn	00pb138, 00pb15225 & 00pb150,
00175pbnoy	jpb175
00175pbn	00pb175, 00pb175L, 00pb200 & 00pb200L
00225pbn	00pb225 & 00pb250
00300pbn	00pb300
3059pbn	00pb113Lh
00125pbnL	00pb125Lh
00150pbnLh	00pb150Lh
00175pbnLh	00pb175Lh & 00pb200Lh
00225pbnLh	00pb225Lh & 00pb250Lh

### Clamps - Sold each

Part Number Worm Gear	Part Number T-Bolt	Use With Part Numbers
70hss32c	70stbc225	00pb75 & 00pb100x
70hss36c	70stbc238	00pb88, 00pb100, 00pb113, 00pb125175 & 00pb113Lh
70hss40c	70stbc275	00pb100fg, 00pb113fg & 00pb125fg
70hss44c	70stbc300	00pb100225, 00pb113h, 00pb125, 00pb15225 & 00pb125Lh
70hss48c	70stbc325	00pb138, 00pb150, jpb175 & 00pb150Lh
70hss56c	70stbc375	00pb175, 00pb200, 00pb175Lh & 00pb200Lh
70hss72c	70stbc425	00pb175L, 00pb200L, 00pb225, 00pb250, 00pb225Lh & 00pb250Lh
70hss88c	70stbc532L	00pb300

B

DRIVETRAIN

B

### Packing Box Studs

Complete w/ two nuts per stud - Sold in pairs



Part Number	Thread Size	Overall Length	Weight, lbs.
studs37	3/8"-16	3"	.20
studs	1/2"-13	3-1/2"	.35
studs62	5/8"-11	6"	.80
studs75	3/4"-10	6"	.95
studs87	7/8"-9	6"	1.10

### Zinc Plated Iron Packing Box Wrenches - Sold each



Part Number	Opening Size	Fits Packing & Lock Nut	Overall Length	Weight, lbs.
3bpbw100	2"	1" & 1-1/8"	9"	1.30
3bpbw125	2-5/16"	1-1/4"	9-1/4"	1.50
3bpbw150	2-9/16"	1-3/8" & 1-1/2"	9-1/2"	1.50
3bpbw200	3-1/4"	1-3/4" & 2"	10-1/2"	2.00
3bpbw250	3-13/16"	2-1/4" & 2-1/2"	15-1/2"	2.80

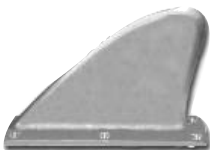
DRIVETRAIN

### Bronze Ski Boat Fin - Sold each



Part Number	Overall Height	Base Width	Base Length	C.S. Screw Size	Weight, lbs.
10ski1	6-7/8"	3-1/2"	6-3/8"	3/8"	4.85

### Bronze Ski Boat Fin - Sold each



Part Number	Overall Height	Base Width	Base Length	C.S. Screw Size	Weight, lbs.
10ski2	6-1/8"	2-3/8"	6-1/8"	#12	4.50

## Bronze Thru Hull Style Shaft Logs - Complete Assembly

Complete w/ spud style packing box\* and lock nut - Sold complete

Part Number	Shaft Size	Packing Size	Hose I. D.	Flange O. D.	Length of Threads	Weight, lbs.
00sL100fg	1"	1/4"	2"	3-1/4"	1-3/4"	3.70
00sL113fg	1-1/8"	3/16"	2"	3-1/4"	1-3/4"	3.70
00sL125fg	1-1/4"	1/4"	2"	3-1/4"	1-3/4"	4.80
00sL138fg	1-3/8"	5/16"	2-1/2"	4"	2"	7.40
00sL150fg	1-1/2"	1/4"	2-1/2"	4"	2"	7.40
00sL175fg	1-3/4"	1/2"	3"	4-3/4"	2-3/8"	18.00
00sL200fg	2"	3/8"	3"	4-3/4"	2-3/8"	18.00
00sL225fg	2-1/4"	7/16"	3-1/2"	5-1/2"	2-1/2"	21.00
00sL250fg	2-1/2"	5/16"	3-1/2"	5-1/2"	2-1/2"	21.00
00sL275fg	2-3/4"	1/2"	4"	5-3/4"	2-9/16"	45.00
00sL300fg	3"	3/8"	4"	5-3/4"	2-9/16"	45.00

\* Packing boxes available separately on page 36.



B

## Bronze Thru Hull Style Shaft Logs - Log Only

Complete w/ lock nut - Sold complete

Part Number	Shaft Size	Hose I. D.	Flange O. D.	Length Under Flange	Length of Threads	Weight, lbs.
00sLL100fg	1"	2"	3-1/4"	3-1/4"	1-3/4"	2.50
00sLL113fg	1-1/8"	2"	3-1/4"	3-1/4"	1-3/4"	2.50
00sLL125fg	1-1/4"	2"	3-1/4"	3-1/4"	1-3/4"	2.50
00sLL138fg	1-3/8"	2-1/2"	4"	4-3/8"	2"	5.00
00sLL150fg	1-1/2"	2-1/2"	4"	4-3/8"	2"	5.00
00sLL175fg	1-3/4"	3"	4-3/4"	5-1/2"	2-3/8"	8.60
00sLL200fg	2"	3"	4-3/4"	5-1/2"	2-3/8"	8.60
00sLL225fg	2-1/4"	3-1/2"	5-1/2"	5-1/2"	2-1/2"	10.40
00sLL250fg	2-1/2"	3-1/2"	5-1/2"	5-1/2"	2-1/2"	10.40
00sLL275fg	2-3/4"	4"	5-3/4"	5-1/4"	2-9/16"	13.00
00sLL300fg	3"	4"	5-3/4"	5-1/4"	2-9/16"	13.00
00sLL450fg	3-1/2"	4-1/2"	6"	5-1/4"	2-3/4"	17.00



DRIVETRAIN

B



### Bronze Offset Style Shaft Logs - Complete Assembly

Complete w/ spud style packing box\* - Sold complete

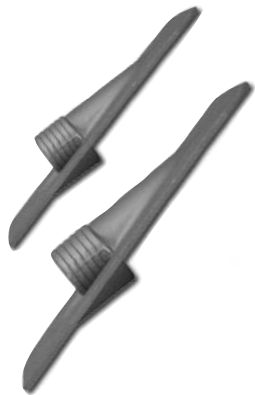
Part Number	Shaft Size	Packing Size	Angle, Deg.	Base Width	Base Length	Hose I. D.	Weight, lbs.
00sLo100	1"	1/4"	15	4-7/8"	10-3/4"	1-3/4"	6.00
00sLo100L4	1"	1/4"	14	5-1/2"	11-1/2"	2"	7.00
00sLo113**	1-1/8"	3/16"	15	4-7/8"	10-3/4"	1-3/4"	6.00
00sLo12514**	1-1/4"	1/4"	14	5-1/2"	20-1/4"	2-1/4"	14.00
00sLo125L4**	1-1/4"	1/4"	17	5-1/2"	15"	2-1/4"	10.00
00sLo125L4	1-1/4"	1/4"	14	5-1/2"	11-1/2"	2"	7.50
00sLo138	1-3/8"	3/16"	12	7"	22-3/8"	2-1/2"	15.00
00sLo150 **	1-1/2"	1/4"	12	7"	22-3/8"	2-1/2"	15.00
00sLo150L4	1-1/2"	1/4"	14	5-1/2"	11-1/2"	2-1/4"	8.50

\* Packing boxes available separately on page 36.

\*\* Available in right or left hand threads.

Baseholes can be installed upon request.

DRIVETRAIN



### Bronze Thru Hull Style Shaft Logs - Log Only - Sold each

Part Number	Shaft Size	Angle, Deg.	Base Width	Base Length	Hose I. D.	Weight, lbs.
00sLoL100	1"	15	4-7/8"	10-3/4"	1-3/4"	6.00
00sLoL10L4	1"	14	5-1/2"	11-1/2"	2"	7.00
00sLoL113	1-1/8"	15	4-7/8"	10-3/4"	1-3/4"	6.00
00sLoL1254	1-1/4"	14	5-1/2"	20-1/4"	2-1/4"	14.00
00sLoL125L	1-1/4"	17	5-1/2"	15"	2-1/4"	10.00
00sLoL12L4	1-1/4"	14	5-1/2"	11-1/2"	2"	7.50
00sLoL138	1-3/8"	12	7"	22-3/8"	2-1/2"	15.00
00sLoL150	1-1/2"	12	7"	22-3/8"	2-1/2"	15.00
00sLoL15L4	1-1/2"	14	5-1/2"	11-1/2"	2-1/4"	8.50

Baseholes can be installed upon request.

## Bronze Angled Shaft Logs - Complete Assembly

Complete w/ spud style packing box\* - Sold each

Part Number	Shaft Size	Packing Size	Angle, Deg.	Base Width	Base Length	Hose I. D.	Weight, lbs.
00sL100x	1"	1/4"	12	3"	11"	1-1/2"	4.70
00sL100	1"	1/4"	13	3-1/2"	12-1/2"	1-3/4"	7.00
00sL113**	1-1/8"	3/16"	13	3-1/2"	12-1/2"	1-3/4"	7.00
00sL113h	1-1/8"	3/16"	12	4-1/4"	14"	2-1/4"	10.30
00sL125**	1-1/4"	1/4"	12	4-1/2"	20-1/2"	2-1/4"	15.20
00sL138	1-3/8"	1/4"	12	5-1/4"	24"	2-1/2"	17.75
00sL138L	1-3/8"	3/16"	8	5-1/4"	28-1/2"	2-1/2"	21.00
00sL150**	1-1/2"	1/4"	12	5-1/4"	24"	2-1/2"	17.75
00sL150L**	1-1/2"	1/4"	8	5-1/4"	28-1/2"	2-1/2"	21.00
00sL175**	1-3/4"	1/2"	9	7"	32-1/2"	3"	31.50
00sL175L	1-3/4"	1/2"	7	7-1/2"	46-1/4"	3-1/2"	48.00
00sL200**	2"	3/8"	9	7"	32-1/2"	3"	31.50
00sL200L	2"	3/8"	7	7-1/2"	46-1/4"	3-1/2"	48.00
00sL225**	2-1/4"	7/16"	7	7-1/2"	46-1/4"	3-1/2"	51.00
00sL250**	2-1/2"	5/16"	7	7-1/2"	46-1/4"	3-1/2"	51.00

\* Packing boxes available separately on page 36.

\*\* Available in right or left hand threads.

Baseholes can be installed upon request.



## Bronze Angled Shaft Logs - Log Only - Sold each

Part Number	Shaft Size	Angle, Deg.	Base Width	Base Length	Hose I. D.	Weight, lbs.
00sLL100x	1"	12	3"	11"	1-1/2"	3.00
00sLL100	1"	13	3-1/2"	12-1/2"	1-3/4"	4.50
00sLL113h	1-1/8"	12	4-1/4"	14"	2-1/4"	7.60
00sLL125	1-1/4"	12	4-1/2"	20-1/2"	2-1/4"	9.50
00sLL138	1-3/8"	12	5-1/4"	24"	2-1/2"	15.00
00sLL150	1-1/2"	12	5-1/4"	24"	2-1/2"	15.00
00sLL150L	1-1/2"	8	5-1/4"	28-1/2"	2-1/2"	16.00
00sLL150300	1-1/2"	12	5-1/4"	24"	3"	15.00
00sLL175	1-3/4"	9	7"	32-1/2"	3"	25.50
00sLL175L	1-3/4"	7	7-1/2"	46-1/4"	3-1/2"	39.00
00sLL200	2"	9	7"	32-1/2"	3"	25.50
00sLL225	2-1/4"	7	7-1/2"	46-1/4"	3-1/2"	39.00
00sLL250	2-1/2"	7	7-1/2"	46-1/4"	3-1/2"	39.00

Baseholes can be installed upon request.



B



### Bronze Shaft Logs - Oval Base - Complete Assembly

Complete w/ spud style packing box\* - Sold complete

Part Number	Shaft Size	Packing Size	Base Width	Base Length	Hose I. D.	Weight, lbs.
00sL100a	1"	1/4"	3"	5-3/4"	1-3/4"	4.15
00sL113a**	1-1/8"	3/16"	3"	5-3/4"	1-3/4"	4.10
00sL125a**	1-1/4"	1/4"	3"	6-1/2"	2-1/4"	5.20

\*Packing boxes available separately on page 36.  
Baseholes can be installed upon request.

\*\* Available in right or left hand threads.

### Bronze Shaft Logs - Rectangular Base - Complete Assembly

Complete w/ spud style packing box\* - Sold complete

Part Number	Shaft Size	Packing Size	Base Width	Base Length	Hose I. D.	Weight, lbs.
00sLr125**	1-1/4"	1/4"	4"	6"	2-1/4"	10.00
00sLr138	1-3/8"	3/16"	4-1/2"	7"	2-1/2"	11.00
00sLr150**	1-1/2"	1/4"	4-1/2"	7"	2-1/2"	11.00
00sLr175**	1-3/4"	1/2"	6"	8-1/4"	3"	16.00
00sLr200**	2"	3/8"	6"	8-1/4"	3"	16.00
00sLr225**	2-1/4"	7/16"	6"	10"	3-1/2"	24.00
00sLr250**	2-1/2"	5/16"	6"	10"	3-1/2"	24.00

\* Packing boxes available separately on page 36.  
Baseholes can be installed upon request.

\*\* Available in right or left hand threads.



### Bronze Shaft Logs - Oval Base - Log Only - Sold each

Part Number	Shaft Size	Base Width	Base Length	Hose I. D.	Weight, lbs.
00sLL100a	1"	3"	5-3/4"	1-3/4"	2.00
00sLL113a	1-1/8"	3"	5-3/4"	1-3/4"	2.00
00sLL125a	1-1/4"	3"	6-1/2"	2-1/4"	2.90

Baseholes can be installed upon request.

### Bronze Shaft Logs - Rectangular Base - Log Only - Sold each

Part Number	Shaft Size	Base Width	Base Length	Hose I. D.	Weight, lbs.
00sLrL125	1-1/4"	4"	6"	2-1/4"	10.00
00sLrL138	1-3/8"	4-1/2"	7"	2-1/2"	11.00
00sLrL150	1-1/2"	4-1/2"	7"	2-1/2"	11.00
00sLrL175	1-3/4"	6"	8-1/4"	3"	16.00
00sLrL200	2"	6"	8-1/4"	3"	16.00
00sLrL225	2-1/4"	6"	10"	3-1/2"	24.00
00sLrL250	2-1/2"	6"	10"	3-1/2"	24.00

Baseholes can be installed upon request.



## Bronze Shaft Logs - Square Base - Complete Assembly

Complete w/ packing box\* & backing plate - Sold complete

Part Number	Shaft Size	Packing Size	Base Size	Hose I. D.	Base Hole C to C	Base Hole Size C.S.	Weight, lbs.
00sLs125g	1-1/4"	3/16"	3-1/16" sq.	2"	2-3/8"	1/4"	5.00
00sLs138g	1-3/8"	1/4"	4-5/8" sq.	2-5/8"	3-1/8"	1/2"	9.00
00sLs150g	1-1/2"	5/16"	4-5/8" sq.	2-5/8"	3-1/8"	1/2"	9.00

\* Packing boxes available separately on page 34.



B

## Bronze Shaft Logs - Square Base

Complete w/ backing plate - Sold complete

Part Number	Shaft Size	Base Size	Hose I. D.	Base Hole C to C	Base Hole Size C.S.	Weight, lbs.
00sLLr125g	1-1/4"	3-1/16" sq.	2"	2-3/8"	1/4"	2.00
00sLLr138g	1-3/8"	4-5/8" sq.	2-5/8"	3-1/8"	1/2"	5.00
00sLLr150g	1-1/2"	4-5/8" sq.	2-5/8"	3-1/8"	1/2"	5.00



## Bronze Triangular Shaft Logs

Complete w/ backing Plate - Sold complete

Part Number	Shaft Size	Hose I. D.	Bolt Hole Circle	Weight, lbs.
13009	1-1/4"	2-1/4"	3-1/4"	2.70
13012	1-3/8"	2-1/2"	3-1/4"	2.30
13673	2"	3"	5"	3.35



B

### Flax Packing - Square Braid Construction

Braided flax fiber that has been thoroughly lubricated with tallow & wax  
Sold in 1lb. rolls.



Part Number	Packing Size	Feet per Roll	Weight, lbs.
flax125Lb	1/8"	100	1.00
flax1875Lb	3/16"	50	1.00
flax250Lb	1/4"	28	1.00
flax3125Lb	5/16"	18	1.00
flax375Lb	3/8"	7	1.00
flax4375Lb	7/16"	7	1.00
flax500Lb	1/2"	7	1.00
flax625Lb	5/8"	4	1.00
flax6875Lb	1 1/16"	4	1.00

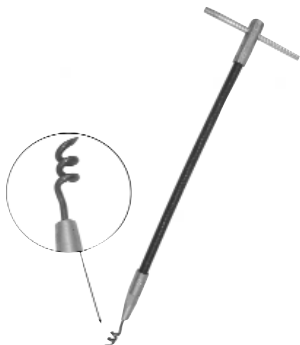
### Dripless Moldable Packing - Sold as a kit



Part Number	Shaft Size	Weight, lbs.
seal150	Up to 1-1/4"	.25
seal300	Up to 3"	.40

### Packing Extractors

Flexible handle, T-grip & cork screw tip - Sold each



Part Number	Overall Length	Weight, lbs.
pe625	6-1/4"	.05
pe725	7-1/4"	.10
pe1200	12"	.20
pe1550	15"	.50

DRIVETRAIN