

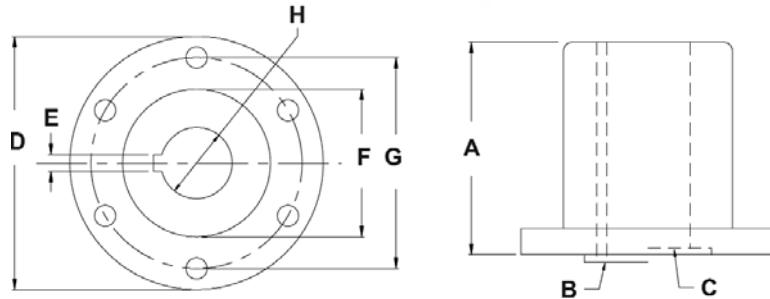
Transmission Couplers



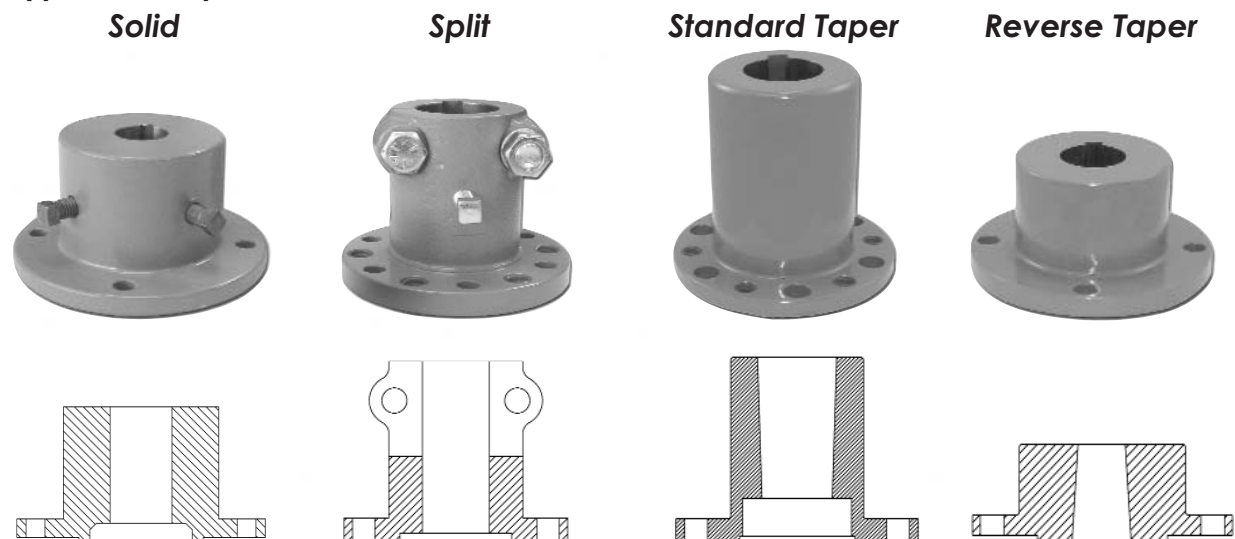
Buck Algonquin manufactures a full line of transmission couplers for most marine transmissions. Our couplers are cast from ductile iron and machined to SAE J755 specifications. Most of our couplers are machined with our universal bolthole pattern. As well, all of our couplers are supplied with mounting hardware. We also offer custom machining for any couplers we do not standardly produce. We carry an extensive inventory in order to better supply our distributors and OEMs.

The following charts can be used to help identify the coupler you need. The first chart is categorized by transmission manufacturer, while the second chart is categorized by flange diameter. Please feel free to contact our knowledgeable sales staff for assistance.

- A - Overall Length
- B - Male Pilot (M type)
- C - Female Pilot (F type)
- D - Flange Diameter
- E - Keyway Width
- F - Pilot Diameter
- G - Bolt Circle Diameter
- H - Shaft Diameter



Types of couplers offered:



Keyway Sizes

Shaft Diameter	Key Size
3/4"	3/16"
7/8" - 1-1/8"	1/4"
1-1/4" - 1-3/8"	5/16"
1-1/2"	3/8"
1-3/4"	7/16"
2"	1/2"
2-1/4"	9/16"
2-1/2" - 2-3/4"	5/8"
3" - 3-1/4"	3/4"
3-1/2" - 3-3/4"	7/8"
4"	1"

Part Number Conversion - The part numbers listed on the following pages are only a prefix. The complete part number will need a suffix number below. Example: Prefix 50mc005 + shaft size of 1-1/4"(125). The complete number would be 50mc005125.

Shaft Diameter	Part Number Suffix	Shaft Diameter	Part Number Suffix
3/4"	075	2-1/4"	225
7/8"	087	2-1/2"	250
1"	100	2-3/4"	275
1-1/8"	112	3"	300
1-1/4"	125	3-1/4"	325
1-3/8"	137	3-1/2"	350
1-1/2"	150	3-3/4"	375
1-3/4"	175	4"	400
2"	200		



Allison

Solid	Part Number Split	Taper	Flange Dia.	Shaft Range	# of Bolts	Bolt Size	Bolt Circle	Pilot	Overall Length
---	---	50tc575	5-3/4"	1-1/2"	6	1/2"	4-3/4"	3" x 1/4" F	5"
---	---	50tc575	5-3/4"	1-3/4" - 2-1/4"	6	1/2"	4-3/4"	3" x 1/4" F	6-1/2"
50mc573	---	---	5-3/4"	1-1/2" - 2"	6	1/2"	4-3/4"	3" x 1/4" F	4-1/2"
---	505751	---	5-3/4"	1-1/4" - 2-1/4"	6	1/2"	4-3/4"	3" x 1/4" F	4-3/16"
---	---	50tc725	7-1/4"	1-3/4" - 2-1/2"	6	5/8"	6"	3-3/4" x 1/4" F	7-3/4"
---	50725a	---	7-1/4"	1-1/4" - 1-3/4"	6	5/8"	6"	3-3/4" x 1/4" F	4-3/8"
---	50725b	---	7-1/4"	2" - 2-1/2"	6	5/8"	6"	3-3/4" x 1/4" F	5-1/2"
---	---	50tc900	9"	2" - 3"	8	3/4"	7-1/2"	6" x 1/4" F	7-3/4"
---	509001	---	9"	1-1/2" - 3"	8	3/4"	7-1/2"	6" x 1/4" F	5-1/2"

Atomic Four (Universal)

Solid	Part Number Split	Taper	Flange Dia.	Shaft Range	# of Bolts	Bolt Size	Bolt Circle	Pilot	Overall Length
50mc3500	---	---	3.410"	7/8" - 1-1/8"	3	3/8"	2-3/4"	1-7/8" x 1/4" F	2.437"

Borg Warner

Solid	Part Number Split	Taper	Flange Dia.	Shaft Range	# of Bolts	Bolt Size	Bolt Circle	Pilot	Overall Length
50mc004	---	---	4"	3/4" - 1-1/2"	4	3/8"	3-1/4"	2-1/2" x 3/32" M	2-1/4"
---	50401s	---	4"	3/4" - 1-1/4"	4	3/8"	3-1/4"	2-1/2" x 3/32" M	2"
---	50400b	---	4"	7/8" - 1-1/2"	4	3/8"	3-1/4"	2-1/2" x 3/32" M	3-7/16"
50mc005	---	---	5"	1" - 2"	4	7/16"	4-1/4"	2-1/2" x 3/32" M	2-5/8"
50mcf004	---	---	4"	3/4" - 1-1/2"	4	3/8"	3-1/4"	2-1/2" x 3/16" F	2-1/4"
50mcf005	---	---	5"	1" - 1-1/2"	4	7/16"	4-1/4"	2-1/2" x 1/4" F	2-5/8"
---	50500a	---	5"	1" - 1-1/2"	4	7/16"	4-1/4"	2-1/2" x 3/32" M	3-7/16"
---	50500c	---	5"	1-1/2" - 2"	4	7/16"	4-1/4"	2-1/2" x 3/32" M	4"
---	50500s	---	5"	1" - 1-1/2"	4	7/16"	4-1/4"	2-1/2" x 3/32" M	2-1/2"
---	---	50tc500	5"	1-1/4"	4	7/16"	4-1/4"	2-1/2" x 3/32" M	3-7/8"
---	---	50tc500	5"	1-3/8"	4	7/16"	4-1/4"	2-1/2" x 3/32" M	4-1/4"
---	---	50tc500	5"	1-1/2"-1-3/4"	4	7/16"	4-1/4"	2-1/2" x 3/32" M	5"
---	---	50tc005*	5"	1-1/4" - 1-3/4"	4	7/16"	4-1/4"	2-1/2" x 3/32" M	2-3/4"
---	---	50tc575	5-3/4"	1-1/2"	6	1/2"	4-3/4"	3" x 1/4" F	5"
---	---	50tc575	5-3/4"	1-3/4" - 2-1/4"	6	1/2"	4-3/4"	3" x 1/4" F	6-1/2"
50mc573	---	---	5-3/4"	1-1/2" - 2"	6	1/2"	4-3/4"	3" x 1/4" F	4-1/2"
---	505751	---	5-3/4"	1-1/4" - 2-1/4"	6	1/2"	4-3/4"	3" x 1/4" F	4-3/16"

* Reverse Taper Bore

F

SHAFTING & ACCESSORIES

Transmission Couplers



Capitol

Solid	Part Number Split	Taper	Flange Dia.	Shaft Range	# of Bolts	Bolt Size	Bolt Circle	Pilot	Overall Length
---	50475a	---	4-3/4"	1" - 1-1/2"	6	7/16"	3-7/8"	2-1/2" x 3/16" F	3-1/2"
---	50475b	---	4-3/4"	1-1/2" - 2"	6	7/16"	3-7/8"	2-1/2" x 3/16" F	4"
50mc4725	---	---	4-3/4"	1-1/4" - 1-1/2"	6	7/16"	3-7/8"	2-1/2" x 3/16" F	3-5/8"
---	---	50tc475	4-3/4"	1-3/8" - 1-3/4"	6	7/16"	3-7/8"	2-1/2" x 3/16" F	4-3/16"
---	---	50tc575	5-3/4"	1-1/2"	6	1/2"	4-3/4"	3" x 1/4" F	5"
---	---	50tc575	5-3/4"	1-3/4" - 2-1/4"	6	1/2"	4-3/4"	3" x 1/4" F	6-1/2"
50mc573	---	---	5-3/4"	1-1/2" - 2"	6	1/2"	4-3/4"	3" x 1/4" F	4-1/2"
---	505751	---	5-3/4"	1-1/4" - 2-1/4"	6	1/2"	4-3/4"	3" x 1/4" F	4-3/16"
---	---	50tc725	7-1/4"	1-3/4" - 2-1/2"	6	5/8"	6"	3-3/4" x 1/4" F	7-3/4"
---	50725a	---	7-1/4"	1-1/4" - 1-3/4"	6	5/8"	6"	3-3/4" x 1/4" F	4-3/8"
---	50725b	---	7-1/4"	2" - 2-1/2"	6	5/8"	6"	3-3/4" x 1/4" F	5-1/8"

Hurth

Solid	Part Number Split	Taper	Flange Dia.	Shaft Range	# of Bolts	Bolt Size	Bolt Circle	Pilot	Overall Length
50mc004	---	---	4"	3/4" - 1-1/2"	4	3/8"	3-1/4"	2-1/2" x 3/32" M	2-1/4"
---	50401s	---	4"	3/4" - 1-1/4"	4	3/8"	3-1/4"	2-1/2" x 3/32" M	2"
---	50400b	---	4"	7/8" - 1-1/2"	4	3/8"	3-1/4"	2-1/2" x 3/32" M	3-7/16"
50mc005	---	---	5"	1" - 2"	4	7/16"	4-1/4"	2-1/2" x 3/32" M	2-5/8"
---	50500a	---	5"	1" - 1-1/2"	4	7/16"	4-1/4"	2-1/2" x 3/32" M	3-7/16"
---	50500c	---	5"	1-1/2" - 2"	4	7/16"	4-1/4"	2-1/2" x 3/32" M	4"
---	---	50tc500	5"	1-1/4"	4	7/16"	4-1/4"	2-1/2" x 3/32" M	3-7/8"
---	---	50tc500	5"	1-3/8"	4	7/16"	4-1/4"	2-1/2" x 3/32" M	4-1/4"
---	---	50tc500	5"	1-1/2"-1-3/4"	4	7/16"	4-1/4"	2-1/2" x 3/32" M	5"

Newage

Solid	Part Number Split	Taper	Flange Dia.	Shaft Range	# of Bolts	Bolt Size	Bolt Circle	Pilot	Overall Length
50mc005	---	---	5"	1" - 2"	4	7/16"	4-1/4"	2-1/2" x 3/32" M	2-5/8"
---	50500a	---	5"	1" - 1-1/2"	4	7/16"	4-1/4"	2-1/2" x 3/32" M	3-7/16"
---	50500c	---	5"	1-1/2" - 2"	4	7/16"	4-1/4"	2-1/2" x 3/32" M	4"
---	---	50tc500	5"	1-1/4"	4	7/16"	4-1/4"	2-1/2" x 3/32" M	3-7/8"
---	---	50tc500	5"	1-3/8"	4	7/16"	4-1/4"	2-1/2" x 3/32" M	4-1/4"
---	---	50tc500	5"	1-1/2"-1-3/4"	4	7/16"	4-1/4"	2-1/2" x 3/32" M	5"
---	---	50tc575	5-3/4"	1-1/2"	6	1/2"	4-3/4"	3" x 1/4" F	5"
---	---	50tc575	5-3/4"	1-3/4" - 2-1/4"	6	1/2"	4-3/4"	3" x 1/4" F	6-1/2"
50mc573	---	---	5-3/4"	1-1/2" - 2"	6	1/2"	4-3/4"	3" x 1/4" F	4-1/2"
---	505751	---	5-3/4"	1-1/4" - 2-1/4"	6	1/2"	4-3/4"	3" x 1/4" F	4-3/16"
---	---	50tc725	7-1/4"	1-3/4" - 2-1/2"	6	5/8"	6"	3-3/4" x 1/4" F	7-3/4"
---	50725a	---	7-1/4"	1-1/4" - 1-3/4"	6	5/8"	6"	3-3/4" x 1/4" F	4-3/8"
---	50725b	---	7-1/4"	2" - 2-1/2"	6	5/8"	6"	3-3/4" x 1/4" F	5-1/8"



Paragon

Solid	Part Number Split	Taper	Flange Dia.	Shaft Range	# of Bolts	Bolt Size	Bolt Circle	Pilot	Overall Length
---	50400a	---	4"	1" - 1-1/2"	4	3/8"	3-1/4"	2" X 3/32" M	3-7/16"
---	50400s	---	4"	7/8" - 1-1/4"	4	3/8"	3-1/4"	2" X 3/32" M	2"
50mc4020	---	---	4"	3/4" - 1-3/8"	4	3/8"	3-1/4"	2" X 3/32" M	2-1/4"
---	50400c	---	4"	1" - 1-1/2"	4	3/8"	3-1/4"	2-5/8" X 3/32" M	3-7/16"
---	50402s	---	4"	1" - 1-1/4"	4	3/8"	3-1/4"	2-5/8" X 3/32" M	2"
50mc4026	---	---	4"	3/4" - 1-3/8"	4	3/8"	3-1/4"	2-5/8" X 3/32" M	2-1/4"
50mc4526	---	---	4-1/2"	1" - 1-3/4"	4	3/8"	3-3/4"	2-5/8" X 3/32" M	2-5/8"
---	50500b	---	5"	1" - 1-1/2"	4	3/8"	4-1/8"	2-3/4" X 3/32" M	3-7/16"
---	50500d	---	5"	1-1/2" - 2"	4	3/8"	4-1/8"	2-3/4" X 3/32" M	4"
---	50501s	---	5"	1" - 1-1/2"	4	3/8"	4-1/8"	2-3/4" X 3/32" M	2-1/2"
50mc5022	---	---	5"	1" - 1-3/4"	4	3/8"	4-1/8"	2-1/4" X 3/32" M	2-5/8"
50mc5027	---	---	5"	1" - 1-3/4"	4	3/8"	4-1/8"	2-3/4" X 3/32" M	2-5/8"

Twin Disc

Solid	Part Number Split	Taper	Flange Dia.	Shaft Range	# of Bolts	Bolt Size	Bolt Circle	Pilot	Overall Length
---	50475a	---	4-3/4"	1" - 1-1/2"	6	7/16"	3-7/8"	2-1/2" x 3/16" F	3-1/2"
---	50475b	---	4-3/4"	1-1/2" - 2"	6	7/16"	3-7/8"	2-1/2" x 3/16" F	4"
50mc4725	---	---	4-3/4"	1-1/4" - 1-1/2"	6	7/16"	3-7/8"	2-1/2" x 3/16" F	3-5/8"
---	---	50tc475	4-3/4"	1-3/8" - 1-3/4"	6	7/16"	3-7/8"	2-1/2" x 3/16" F	4-3/16"
--	50501a	---	5"	1" - 1-1/2"	8	3/8"	4-1/8"	2-1/2" x 3/32" M	3-7/16"
---	---	50tc501	5"	1-1/4" - 1-3/4"	8	3/8"	4-1/8"	2-1/2" x 3/32" M	5-3/32"
---	505752	---	5-3/4"	1-1/4" - 2-1/4"	6	5/8"	4-3/4"	3" x 1/4" F	4-3/16"
50mc574	---	---	5-3/4"	1-1/2" - 2"	6	5/8"	4-3/4"	3" x 1/4" F	4-1/2"
---	---	50tc576	5-3/4"	1-1/2"	6	5/8"	4-3/4"	3" x 1/4" F	5"
---	---	50tc576	5-3/4"	1-3/4" - 2-1/4"	6	5/8"	4-3/4"	3" x 1/4" F	6-1/2"
---	50726a	---	7-1/4"	1-1/4" - 1-3/4"	6	3/4"	6"	3-3/4" x 1/4" F	4-3/8"
---	50726b	---	7-1/4"	2" - 2-1/2"	6	3/4"	6"	3-3/4" x 1/4" F	5-1/8"
---	---	50tc726	7-1/4"	1-3/4" - 2-1/2"	6	3/4"	6"	3-3/4" x 1/4" F	7-3/4"
---	---	50tc901	9"	2" - 3"	8	7/8"	7-1/2"	6" x 1/4" F	7-3/4"
---	509002	---	9"	1-1/2" - 3"	8	7/8"	7-1/2"	6" x 1/4" F	5-1/2"
---	501050	---	10-1/2"	2-1/2" - 4"	8	1"	8-3/4"	5" x 1/4" F	6-1/2"
---	---	50tc1050	10-1/2"	2-1/2" - 4"	8	1"	8-3/4"	5" x 1/4" F	8"

Volvo Penta

Solid	Part Number Split	Taper	Flange Dia.	Shaft Range	# of Bolts	Bolt Size	Bolt Circle	Pilot	Overall Length
50mvp400	---	---	3.945"	3/4" - 1-1/4"	4	10mm	3.142"	2.366" x 3/32" F	2-17/32"

Transmission Couplers



Yanmar

Solid	Part Number Split	Taper	Flange Dia.	Shaft Range	# of Bolts	Bolt Size	Bolt Circle	Pilot	Overall Length
---	50400ys	---	4"	3/4" - 1-1/4"	4	10mm	3.070"	1.966" x 5/32" M	2"
50mcy004	---	---	4"	3/4" - 1-3/8"	4	10mm	3.070"	1.966" x 5/32" M	2-1/4"
---	50500ys	---	4-3/4"	1" - 1-1/2"	4	10mm	3.937"	2.556" x 1/8" M	3-7/16"
50mcy005	---	---	4-3/4"	1" - 1-3/4"	4	10mm	3.937"	2.556" x 1/8" M	2-3/8"
50mcy4lh	---	---	5.120"	1" - 1-1/2"	4	10mm	4-1/4"	2.499" x 3/16" M	3-29/32"

ZF

Solid	Split	Taper	Flange Dia.	Shaft Range	# of Bolts	Bolt Size	Bolt Circle	Pilot	Overall Length
---	50476a	---	4-3/4"	1" - 1-1/2"	6	12mm	3-7/8"	2-1/2" x 3/16" F	3-1/2"
---	50476b	---	4-3/4"	1-1/2" - 2"	6	12mm	3-7/8"	2-1/2" x 3/16" F	4"
50mc4726	---	---	4-3/4"	1-1/4" - 1-1/2"	6	12mm	3-7/8"	2-1/2" x 3/16" F	3-5/8"
---	---	50tc476	4-3/4"	1-3/8" - 1-3/4"	6	12mm	3-7/8"	2-1/2" x 3/16" F	4-3/16"
50mc574	---	---	5-3/4"	1-1/2" - 2"	6	16mm	4-3/4"	3" x 1/4" F	4-1/2"
---	505752	---	5-3/4"	1-1/4" - 2-1/4"	6	5/8"	4-3/4"	3" x 1/4" F	4-3/16"
---	---	50tc576	5-3/4"	1-1/2"	6	5/8"	4-3/4"	3" x 1/4" F	5"
---	---	50tc576	5-3/4"	1-3/4" - 2-1/4"	6	5/8"	4-3/4"	3" x 1/4" F	6-1/2"
---	50610b	---	6.10"	1-3/4" - 2-1/2"	10	5/8"	4.921"	3.94" x .215" F	5"
---	---	50tc610	6.10"	2" - 2-1/4"	10	5/8"	4.921"	3.94" x .215" F	6-1/2"
---	50669	---	6.69"	1-3/4" - 2-1/2"	12	16mm	5.512"	4.530" x 9/32" F	5"
---	---	50tc669	6.69"	2"	12	16mm	5.512"	4.530" x 9/32" F	6-1/2"
---	---	50tc669	6.69"	2-1/4" - 3"	12	16mm	5.512"	4.530" x 9/32" F	7-1/2"
---	---	50tc725g	7.283"	2" - 2-1/4"	12	18mm	6.122"	4.725" x 9/32" F	6-1/2"
---	---	50tc725g	7.283"	2-1/2" - 3"	12	18mm	6.122"	4.725" x 9/32" F	7-1/2"
---	50725bzf	---	7-1/4"	2" - 2-1/2"	8	16mm	6"	3-3/4" x 1/4" F	5-1/8"
---	---	50tc72zf	7-1/4"	1-3/4" - 2-1/2"	8	16mm	6"	3-3/4" x 1/4" F	7-3/4"
---	50787zf	---	7-7/8"	1-1/2" - 2-3/4"	8	16mm	6.693"	5.512" x 9/32" F	5-1/2"
---	50807zf	---	8.07"	1-1/2" - 2-3/4"	10	18mm	6.693"	5.512" x 9/32" F	5-1/2"
---	---	50tc807	8.07"	2" - 2-1/2"	10	18mm	6.693"	5.512" x 9/32" F	7-3/4"
---	50886	---	8.86"	2" - 2-1/2"	8	16mm	7.717"	5.514" x 1/4" F	5-1/2"
---	---	50tc886	8.86"	2" - 4"	8	16mm	7.717"	5.514" x 1/4" F	7-3/4"
---	501050	---	10-1/2"	2-1/2" - 4"	8	1"	8-3/4"	5" x 1/4" F	6-1/2"
---	---	50tc1050	10-1/2"	2-1/4" - 4"	8	1"	8-3/4"	5" x 1/4" F	8"

Miscellaneous

Solid	Part Number Split	Taper	Flange Dia.	Shaft Range	# of Bolts	Bolt Size	Bolt Circle	Pilot	Overall Length
---	50400d	---	4"	1-1/2"	8	3/8"	3-1/4"	2" x 3/16" F	3-3/8"



Transmission Guide

Flange Dia.	Transmission	Model Number	Pilot M/F	# of Bolts	Bolt Dia.	Bolt Circle	Part Number		
							Solid	Split	Taper
3.410"	Universal	Atomic 4	1.876"/F	3	3/8"	2-3/4"	50mc3500	---	---
3.945"	Volvo Penta	MB10A, MD38, MD7A, MD11C	2.362"/F	4	3/8"	3.149"	50mvp400	---	---
4"	Hurth	HBW5, 10, 20, 50, 100, 125, 125H, 150, 150A, 150V, 220, 250, HSW450D, 250H, 250A	2-1/2"/M	4	3/8"	3-1/4"	50mc004	50401s, 50400b	---
4"	Borg Warner	70C, 1017, 1023, 2301	2-1/2"/M	4	3/8"	3-1/4"	50mc004	50401s, 50400b	---
4"	Newage	PRM Delta	2-1/2"/M	4	3/8"	3-1/4"	50mc004	50401s, 50400b	---
4"	Paragon	HF, HB, RD	2"/M	4	3/8"	3-1/4"	50mc4020	50400s, 50400a	---
4"	Paragon	P-200, P-300, P-13, PV-300	2-5/8"/M	4	3/8"	3-1/4"	50mc4026	---	---
4"	ZF	ZF5M, 10M, 12M, 12, 15M, 15MA, 15MIV, 25M, 25MA, 30M, 45C, 25, 25A, 45IV	2-1/2"/M	4	3/8"	3-1/4"	50mc004	50401s, 50400b	---
4-1/2"	Paragon	RA, PV400	2-5/8"/M	4	3/8"	3-3/4"	50mc4526	---	---
4-3/4"	Capitol	5HD200	2-1/2"/F	6	7/16"	3-7/8"	50mc4725	50475a, 50475b	50tc475
4-3/4"	Twin Disc	MG-502, 502-1	2-1/2"/F	6	7/16"	3-7/8"	50mc4725	50475a, 50475b	50tc475
4-3/4"	Yanmar	30M30H/G, KVH20, KHIS	2.556/M	4	10mm	3.937"	50mcy005	50500ys	---
4-3/4"	ZF	ZF220A, IRM220A1, IRM220A/V, ZF220V, IRM220V2, IRM225A	2-1/2"/F	6	12mm	3-7/8"	50mc4726	50476a, 50476b	50tc476
5"	Borg Warner	72C-1017, 1018, 1004, 1005, 1013, 1014, 2001	2-1/2"/M	4	7/16"	4-1/4"	50mc005	50500a, 50500c	50tc500
5"	Hurth	HS25A, HS45A, HS63IV, HSW630A, 630H, 630V, 880D, 450A2, 630D, 630A1, 630H1, 630V1, 90ATS, 90TS, 90VTS, 110TS, HSW630, 630A, 400, 450, 600, 630	2-1/2"/M	4	7/16"	4-1/4"	50mc005	50500a, 50500c	50tc500
5"	Newage	PRM 210/160	2-1/2"/M	4	7/16"	4-1/4"	50mc005	50500a, 50500c	50tc500
5"	Paragon	P-400	2-3/4"/M	4	3/8"	4-1/8"	50mc5027	50500b, 50500d	---
5"	Twin Disc	5010A, 5011A	2-1/2"/M	8	7/16"	4-1/8"	---	50501a	---
5"	Volvo Penta	MS, MS3, MS4A, MV2	2-1/2"/M	4	7/16"	4-1/4"	50mc005	50500a, 50500c	50tc500
5"	ZF	ZF88C, 45A, 63A, 63C, 63IV, 90ATS, 90TS, 110TS, IRM41A2, 50A2, 50V2, 50V3, 501, 50A2/K3, 50V2/3LD	2-1/2"/M	4	7/16"	4-1/4"	50mc005	50500a, 50500c	50tc500
5.120"	Yanmar	4LH-TE/4LH-HTE	2-1/2"/M	4	12mm	4-1/4"	50mcy4Lh	---	---
5-3/4"	Allison	n/a	3"/F	6	1/2"	4-3/4"	50mc573	505751	50tc575
5-3/4"	Borg Warner	n/a	3"/F	6	1/2"	4-3/4"	50mc573	505751	50tc575
5-3/4"	Capitol	2H3/4HE-10200, 2HE/4H3-11200, M105, M125	3"/F	6	1/2"	4-3/4"	50mc573	505751	50tc575
5-3/4"	Hurth	HSW800A, 800V, 800VI, 110VTS	3"/F	6	1/2"	4-3/4"	50mc573	505751	50tc575
5-3/4"	Hurth	HSW800A2, 800A3, 110ATS	3"/F	6	5/8"	4-3/4"	50mc574	505752	50tc576

F

SHAFTING & ACCESSORIES

Transmission Couplers



Transmission Guide - Continued

Flange Dia.	Transmission	Model Number	Pilot M/F	# of Bolts	Bolt Dia.	Bolt Circle	Solid	Part Number Split	Taper
5-3/4"	Newage	PRM302, 310, 401, 402, 500D, 601, 601A	3"/F	6	1/2"	4-3/4"	50mc573	505751	50tc575
5-3/4"	Twin Disc	MG506, 5061A, 5062V, 507, 5050, 5050A, 5050V, 5061, 506-1, 506A, 507-2, 507-1, 507A-1, 507A-2	3"/F	6	5/8"	4-3/4"	50mc574	505752	50tc576
5-3/4"	ZF	IRM.301, 220V/LD, ZF80IV, 85IV, 110IVTS, 220IV	3"/F	6	1/2"	4-3/4"	50mc573	505751	50tc575
5-3/4"	ZF	IRM220PL, 280A, 280V-LD-1, 300VTS, 301A-1, 301A-2, 30, PL- 301PL-2, ZF80A, 85A, 110ATS, 220, 2801, 2801A, 280IV, 280A, 285A, 285IV, 286A, 286IV, 3001TS, 3001ATS, 300IVTS, 301A, 301C	3"/F	6	5/8"	4-3/4"	50mc574	505752	50tc576
6.10"	ZF	ZF3051, 305A, 3051A	3.94"/F	10	16mm	4.921"	---	50610b	50tc610
6.69"	ZF	ZF325ATS, 325IV, 325IVTS, 325TS, 3251, 3251A, IRM325A, 165PL	4.528"/F	12	16mm	5.512"	---	50669	50tc669
7-1/4"	Allison	M	3-3/4"/F	6	5/8"	6"	---	50725a, 50725b	50tc725
7-1/4"	Allison	M	3-3/4"/F	6	3/4"	6"	---	50726a, 50726b	50tc726
7-1/4"	Capitol	4HE10700, 11700, HY22000, 24000, HY2500, HY6900	3-3/4"/F	6	5/8"	6"	---	50725a, 50725b	50tc725
7-1/4"	Capitol	D5072	3-3/4"/F	6	3/4"	6"	---	50726a, 50726b	50tc726
7-1/4"	Newage	PRM60, 601, 601A	3-3/4"/F	6	5/8"	6"	---	50725a, 50725b	50tc725
7-1/4"	Twin Disc	MG506, 5065A, 507, 507-1, 507-2, 507A-1, 507A-2, 5075, 5075A, 5075IV, 5085, 509, 509-1SC, 508-1, 509-1, 5091V, 509-1SC, 5090A	3-3/4"/F	6	3/4"	6"	---	50726a, 50726b	50tc726
7-1/4"	ZF	IRM310AL, V250M	3-3/4"/F	6	16mm	6"	---	50725a, 50725b	50tc725
7-1/4"	ZF	IRM302VLD1, 302V/6, 304A, 310A, 310PL, 311A, 311A-1, 311PL, 312TS, V250M, ZF302IV, 304A, 304C, 311A, 312TS	3-3/4"/F	8	16mm	6"	---	50725bzf	50tc72zf
7.28"	ZF	BW190, 195, 195P, 2000A, 2060A, ZF2000, 2000A, ZF2000V, 2050, 2050A, 2050V, 2060, 2060A, 2060V, 2070, 2070V, 2150, 2150A, 2150V,	4.725"/F	12	18mm	6.122"	---	---	50tc725g
7.87"	ZF	IRM200, 320PL, V250M	5.511"/F	8	16mm	6.732"	---	50787zf	---
8.07"	ZF	BW155, 155A, 155ATS, 155TS, 155V, IRM311PL, 320, 320A, 350-A, 350A-2, 350AL/PL, 350ATS, 350PL-2, 350TS, 350V-LD-1, 350V, ZF311, ZF350, 350A, 350ATS, 350IV, 350TS, 350V, 500A, 500IV, 510A, 550, 550A, 550ATS, 550TS, 665, 665A, 665ATS, 665TS, 665V,	5.511"/F	10	18mm	6.692"	---	50807zf	50tc807
8.86"	ZF	IRM320, 320A, 320/LAV, 3202, ZF320, ZF550VTS	5.514"/F	8	16mm	7.717"	---	50886	50tc886
8.86"	ZF	BW250, 250V, 2500A, 255, 255A, 255AP, 255P, 255V, 255VP, ZF2500, 2500A, 2500V, 2550, 2550A, 2550V, 2555V, 2555, 2555A, 2555V,	5.514"/F	tbd	16mm	7.717"	---	----	50tc886
9"	Allison	M20	6"/F	8	3/4"	7-1/2"	---	509001	50tc900
9"	Allison	MH, 15R-L	6"/F	8	7/8"	7-1/2"	---	509002	50tc901
9"	Twin Disc	MG510A, 5111A, DD511, 510, 5111SC, 5114A, 5135A	6"/F	8	7/8"	7-1/2"	---	509002	50tc901
9"	ZF	IRM320AL	6"/F	8	7/8"	7-1/2"	---	509002	50tc901
10-1/2"	Twin Disc	MG509, 512, 513, 514, 514C	5"/F	8	1"	8-3/4"	---	501050	50tc1050
10-1/2"	ZF	IRM320LAV	5"/F	8	1"	8-3/4"	---	501050	50tc1050

SHAFTING & ACCESSORIES