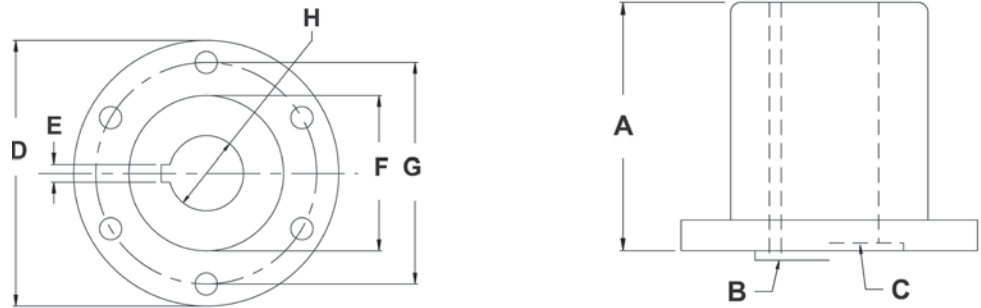


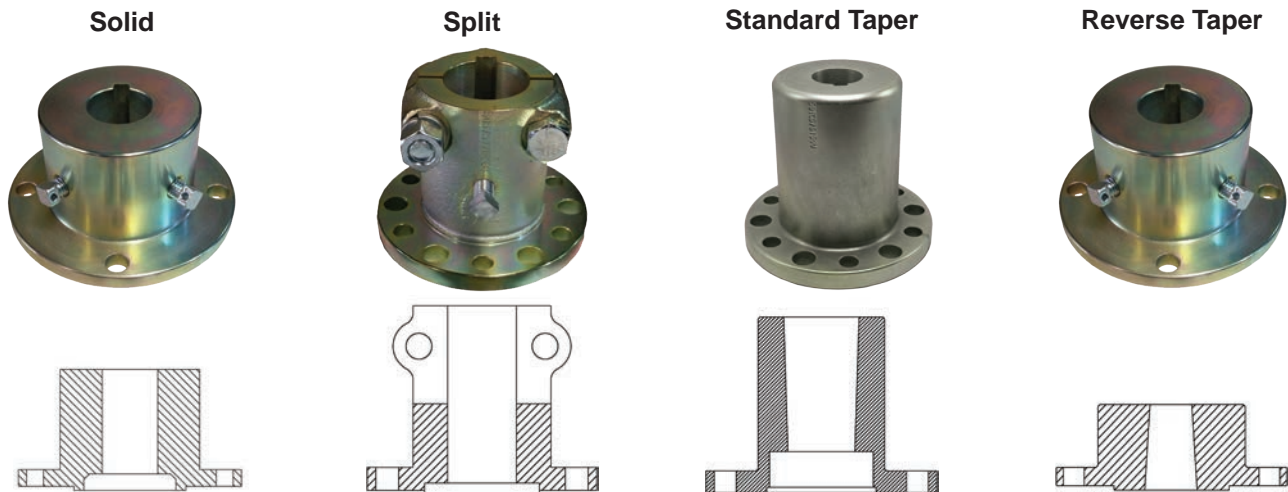
Hydrasearch manufactures a full line of transmission couplers for most marine transmissions. Our couplers are cast from ductile iron and machined to SAE J755 specifications. Most of our couplers are machined with our universal bolthole pattern. All of our couplers are supplied with mounting hardware. We also offer custom machining for any couplers we do not produce standard. We carry an extensive inventory in order to better supply our distributors and OEMs.

The following charts can be used to help identify the coupler you need. The first chart is categorized by transmission manufacturer, while the second chart is categorized by flange diameter. Please feel free to contact our knowledgeable sales staff for assistance at 410-643-7145 or [information@hydrasearch.com](mailto:information@hydrasearch.com).

- A - Overall Length
- B - Male Pilot (M type)
- C - Female Pilot (F type)
- D - Flange Diameter
- E - Keyway Width
- F - Pilot Diameter
- G - Bolt Circle Diameter
- H - Shaft Diameter



**Types of couplers offered:**



**Part Number Conversion** - The part numbers listed on the following pages are only a prefix. The complete part number will need a suffix number shown at left. Example: Prefix 50mc005 + shaft size of 1¼"(125). The complete number would be 50mc005125.

**Keyway Sizes**

Shaft Diameter	Key Size	Shaft Diameter	Key Size
¾"	3/16"	¾"	075
7/8"-1 1/8"	¼"	7/8"	087
1 ¼"-1 3/8"	5/16"	1"	100
1 ½"	3/8"	1 1/8"	112
1 ¾"	7/16"	1 ¼"	125
2"	½"	1 3/8"	129
2 ¼"	9/16"	1 ½"	150
2 ½"-2 ¾"	5/8"	1 ¾"	175
3"-3 ¼"	¾"		
3 ½"-3 ¾"	7/8"		
4"	1"		

### Flange Puller



- Features:**
- coupler removal tool
  - 3/4" bolt included

Flange Diameter	Weight lbs.	Cast Iron Part #
5"	2.75	<b>50MCP00500</b>

### Coupler Flange Bolt Sets



- Features:**
- bolts, nuts and Grade 5 lock washers included
  - sold in packs

Bolt Size	Package Qty.	Bronze Part #
3/8"-24 x 1 1/2"	4	<b>BOLTSET375</b>
7/16"-20 x 1 1/2"	4	<b>BOLTSET437</b>
1/2"-20 x 2"	6	<b>BOLTSET500</b>
5/8"-18 x 2"	6	<b>BOLTSET626</b>
3/4"-16 x 2 3/4"	8	<b>BOLTSET750</b>
7/8"-14 x 2 3/4"	8	<b>BOLTSET875</b>
1"-14 x 3"	8	<b>BOLTSET100</b>

#### Metric

- Features:**
- bolts, nuts and Grade 8.8 lock washers included
  - sold in packs

Bolt Size	Package Qty.	Bronze Part #
10mm x 40mm	4	<b>BOLTSET10M</b>
12mm x 40mm	6	<b>BOLTSET12M</b>
16mm x 50mm	6, 8, 10 or 12	<b>BOLTSET16M</b>
18mm x 70mm	10	<b>BOLTSET18M</b>
20mm x 80mm	10	<b>BOLTSET20M</b>

### Split Coupler Pinch Bolt Sets



- Features:**
- bolts, nuts and Grade 5 lock washers included
  - sold in pairs

Bolt Size	Part #
5/16"-24 x 1 3/4"	<b>PINCH312</b>
7/16"-20 x 2 1/2"	<b>PINCH432</b>
1/2"-20 x 3"	<b>PINCH500</b>
5/8"-18 x 3"	<b>PINCH625</b>
3/4"-16 x 4 1/2"	<b>PINCH750</b>
3/4"-14 x 5 1/4"	<b>PINCH751</b>

### Setscrews

- Feature:**
- zinc plated Grade 5 steel



Bolt Size	Part #
3/8"-16 x 1"	<b>SETSCEW370</b> <sup>1</sup>
3/8"-16 x 1 1/4"	<b>SETSCEW375</b> <sup>1</sup>
1/2"-13 x 1 1/4"	<b>SETSCEW500</b>
5/8"-11 x 1 1/2"	<b>SETSCEW625</b>
3/4"-10 x 1 3/4"	<b>SETSCEW750</b>

<sup>1</sup> Setscrews come with drilled heads. Drilled heads unavailable unless otherwise shown.

## Allison

Flange Diameter	Shaft Range	# of Bolts	Bolt Size	Bolt Circle	Pilot	Overall Length	Solid Part #	Split Part #	Taper Part #
5¾"	1½"	6	½"	4¾"	3" x ¼" F	5"	---	---	50TC575
5¾"	1¾"-2¼"	6	½"	4¾"	3" x ¼" F	6½"	---	---	50TC575
5¾"	1½"-2"	6	½"	4¾"	3" x ¼" F	4½"	50MC573	---	---
5¾"	1¼"-2¼"	6	½"	4¾"	3" x ¼" F	5¾ <sub>32</sub> "	---	505751	---
5¾"	2½"	6	½"	4¾"	3" x ¼" F	5¾ <sub>32</sub> "	---	505751	---
7¼"	1¾"-2½"	6	⅝"	6"	3¾" x ¼" F	7¼"	---	---	50TC725
7¼"	2"-2½"	6	⅝"	6"	3¾" x ¼" F	7¾"	---	---	50TC725
7¼"	1¼"-1¾"	6	⅝"	6"	3¾" x ¼" F	4¾"	---	50725A	---
7¼"	2"-2½"	6	⅝"	6"	3¾" x ¼" F	5½"	---	50725B	---
9"	2"-3"	8	¾"	7½"	6" x ¼" F	7¾"	---	---	50TC900
9"	1½"-3"	8	¾"	7½"	6" x ¼" F	5½"	---	509001	---

## Atomic Four (Universal)

Flange Diameter	Shaft Range	# of Bolts	Bolt Size	Bolt Circle	Pilot	Overall Length	Solid Part #	Split Part #	Taper Part #
3.410"	⅞"-1⅛"	3	⅜"	2¾"	1⅞" x ¼" F	2.437"	50MC3500	---	---

## Borg Warner

Flange Diameter	Shaft Range	# of Bolts	Bolt Size	Bolt Circle	Pilot	Overall Length	Solid Part #	Split Part #	Taper Part #
4"	¾"-1½"	4	⅜"	3¼"	2½" x ⅜ <sub>32</sub> " M	2¼"	50MC004	---	---
4"	¾"-1¼"	4	⅜"	3¼"	2½" x ⅜ <sub>32</sub> " M	2"	---	50401S	---
4"	⅞"-1½"	4	⅜"	3¼"	2½" x ⅜ <sub>32</sub> " M	3 <sup>7</sup> / <sub>16</sub> "	---	50400B	---
4"	¾"-1½"	4	⅜"	3¼"	2½" x ⅜ <sub>16</sub> " M	2¼"	50MCF004	---	---
5"	1"-2"	4	7 <sub>16</sub> "	4¼"	2½" x ⅜ <sub>32</sub> " M	5 <sup>5</sup> / <sub>8</sub> "	50MC005	---	---
5"	1"-1½"	4	7 <sub>16</sub> "	4¼"	2½" x ¼" F	2 <sup>5</sup> / <sub>8</sub> "	50MCF005	---	---
5"	1"-1½"	4	7 <sub>16</sub> "	4¼"	2½" x ⅜ <sub>32</sub> " M	3 <sup>7</sup> / <sub>16</sub> "	---	50500A	---
5"	1½"-2"	4	7 <sub>16</sub> "	4¼"	2½" x ⅜ <sub>32</sub> " M	4"	---	50500C	---
5"	1"-1½"	4	7 <sub>16</sub> "	4¼"	2½" x ⅜ <sub>32</sub> " M	2½"	---	50500S	---
5"	1¼"	4	7 <sub>16</sub> "	4¼"	2½" x ⅜ <sub>32</sub> " M	3 <sup>7</sup> / <sub>8</sub> "	---	---	50TC500
5"	1⅝"	4	7 <sub>16</sub> "	4¼"	2½" x ⅜ <sub>32</sub> " M	4¼"	---	---	50TC500
5"	1½"-1¾"	4	7 <sub>16</sub> "	4¼"	2½" x ⅜ <sub>32</sub> " M	5"	---	---	50TC500
5"	1¼"-1¾"	4	7 <sub>16</sub> "	4¼"	2½" x ⅜ <sub>32</sub> " M	2¾"	---	---	50TC005 <sup>1</sup>
5¾"	1½"	6	½"	4¾"	3" x ¼" F	5"	---	---	50TC575
5¾"	1¾"-2¼"	6	½"	4¾"	3" x ¼" F	6½"	---	---	50TC575
5¾"	1½"-2"	6	½"	4¾"	3" x ¼" F	4½"	50MC573	---	---
5¾"	1¼"-2¼"	6	½"	4¾"	3" x ¼" F	5¾ <sub>32</sub> "	---	505751	---
5¾"	2½"	6	½"	4¾"	3" x ¼" F	5¾ <sub>32</sub> "	---	505751	---

<sup>1</sup> reverse taper bore

## Capitol

Shafting &amp; Accessories

Flange Diameter	Shaft Range	# of Bolts	Bolt Size	Bolt Circle	Pilot	Overall Length	Solid Part #	Split Part #	Taper Part #
4¾"	1"-1½"	6	7/16"	3⅞"	2½" x 3/16" F	3½"	---	<b>50475A</b>	---
4¾"	1½"-2"	6	7/16"	3⅞"	2½" x 3/16" F	4"	---	<b>50475B</b>	---
4¾"	1¼"-1½"	6	7/16"	3⅞"	2½" x 3/16" F	3⅝"	<b>50MC475</b>	---	---
4¾"	1⅜"-1¾"	6	7/16"	3⅞"	2½" x 3/16" F	4¾"	---	---	<b>50TC475</b>
5¾"	1½"	6	½"	4¾"	3" x ¼" F	5"	---	---	<b>50TC575</b>
5¾"	1¾"-2¼"	6	½"	4¾"	3" x ¼" F	6½"	---	---	<b>50TC575</b>
5¾"	1½"-2"	6	½"	4¾"	3" x ¼" F	4½"	<b>50MC573</b>	---	---
5¾"	1¼"-2¼"	6	½"	4¾"	3" x ¼" F	5¾"	---	<b>505751</b>	---
7¼"	1¾"-2½"	6	⅝"	6"	3¾" x ¼" F	7¼"	---	---	<b>50TC725</b>
7¼"	2"-2½"	6	⅝"	6"	3¾" x ¼" F	7¾"	---	---	<b>50TC725</b>
7¼"	1¼"-1¾"	6	⅝"	6"	3¾" x ¼" F	4¾"	---	<b>50725A</b>	---
7¼"	2"-2½"	6	⅝"	6"	3¾" x ¼" F	5½"	---	<b>50725B</b>	---

## Hurth

Flange Diameter	Shaft Range	# of Bolts	Bolt Size	Bolt Circle	Pilot	Overall Length	Solid Part #	Split Part #	Taper Part #
4"	¾"-1½"	4	⅜"	3¼"	2½" x 3/32" M	2¼"	<b>50MC004</b>	---	---
4"	¾"-1¼"	4	⅜"	3¼"	2½" x 3/32" M	2"	---	<b>50401S</b>	---
4"	7/8"-1½"	4	⅜"	3¼"	2½" x 3/32" M	37/16"	---	<b>50400B</b>	---
5"	1"-2"	4	7/16"	4¼"	2½" x 3/32" M	2⅝"	<b>50MC005</b>	---	---
5"	1"-1½"	4	7/16"	4¼"	2½" x 3/32" M	37/16"	---	<b>50500A</b>	---
5"	1"-2"	4	7/16"	4¼"	2½" x 3/32" M	4"	---	<b>50500C</b>	---
5"	1¼"	4	7/16"	4¼"	2½" x 3/32" M	3⅞"	---	---	<b>50TC500</b>
5"	1⅜"	4	7/16"	4¼"	2½" x 3/32" M	4¼"	---	---	<b>50TC500</b>
5"	1½"-1¾"	4	7/16"	4¼"	2½" x 3/32" M	5"	---	---	<b>50TC500</b>

## Newage

Flange Diameter	Shaft Range	# of Bolts	Bolt Size	Bolt Circle	Pilot	Overall Length	Solid Part #	Split Part #	Taper Part #
5"	1"-2"	4	7/16"	4¼"	2½" x 3/32" M	2⅝"	<b>50MC005</b>	---	---
5"	1"-1½"	4	7/16"	4¼"	2½" x 3/32" M	37/16"	---	<b>50500A</b>	---
5"	1½"-2"	4	7/16"	4¼"	2½" x 3/32" M	4"	---	<b>50500C</b>	---
5"	1¼"	4	7/16"	4¼"	2½" x 3/32" M	3⅞"	---	---	<b>50TC500</b>
5"	1⅜"	4	7/16"	4¼"	2½" x 3/32" M	4¼"	---	---	<b>50TC500</b>
5"	1½"-1¾"	4	7/16"	4¼"	2½" x 3/32" M	5"	---	---	<b>50TC500</b>
5¾"	1½"	6	½"	4¾"	3"-¼" F	5"	---	---	<b>50TC575</b>
5¾"	1¾"-2¼"	6	½"	4¾"	3"-¼" F	6½"	---	---	<b>50TC575</b>
5¾"	1½"-2"	6	½"	4¾"	3"-¼" F	4½"	<b>50MC573</b>	---	---
5¾"	1¼"-2¼"	6	½"	4¾"	3"-¼" F	5¾"	---	<b>505751</b>	---
7¼"	1¾"-2½"	6	⅝"	6"	3¾" x ¼" F	7¼"	---	---	<b>50TC725</b>
7¼"	1¾"-2½"	6	⅝"	6"	3¾"-¼" F	7¾"	---	---	<b>50TC725</b>
7¼"	1¼"-1¾"	6	⅝"	6"	3¾"-¼" F	4¾"	---	<b>50725A</b>	---
7¼"	2"-2½"	6	⅝"	6"	3¾"-¼" F	5½"	---	<b>50725B</b>	---

## Paragon

Flange Diameter	Shaft Range	# of Bolts	Bolt Size	Bolt Circle	Pilot	Overall Length	Solid Part #	Split Part #	Taper Part #
4"	1"-1½"	4	⅜"	3¼"	2" x ⅜" M	3⅞"	---	<b>50400A</b>	---
4"	7⁄8"-1¼"	4	⅜"	3¼"	2" x ⅜" M	2"	---	<b>50400S</b>	---
4"	¾"-1⅜"	4	⅜"	3¼"	2" x ⅜" M	2¼"	<b>50MC4020</b>	---	---
4"	1"-1½"	4	⅜"	3¼"	2⅝" x ⅜" M	3⅞"	---	<b>50400C</b>	---
4"	1"-1¼"	4	⅜"	3¼"	2⅝" x ⅜" M	2"	---	<b>50402S</b>	---
4"	¾"-1⅜"	4	⅜"	3¼"	2⅝" x ⅜" M	2¼"	<b>50MC4026</b>	---	---
4½"	1"-1¾"	4	⅜"	3¼"	2⅝" x ⅜" M	2⅝"	<b>50MC4526</b>	---	---
5"	1"-1½"	4	⅜"	4⅞"	2¾" x ⅜" M	3⅞"	---	<b>50500B</b>	---
5"	1"-1½"	4	⅜"	4⅞"	2¾" x ⅜" M	2½"	---	<b>50501S</b>	---

## Twin Disc

Flange Diameter	Shaft Range	# of Bolts	Bolt Size	Bolt Circle	Pilot	Overall Length	Solid Part #	Split Part #	Taper Part #
4¾"	1"-1½"	6	7⁄16"	3⅞"	2½" x ⅜" F	3½"	---	<b>50475A</b>	---
4¾"	1½"-2"	6	7⁄16"	3⅞"	2½" x ⅜" F	4"	---	<b>50475B</b>	---
4¾"	1¼"-1½"	6	7⁄16"	3⅞"	2½" x ⅜" F	3⅝"	<b>50MC4725</b>	---	---
4¾"	1⅜"-1¾"	6	7⁄16"	3⅞"	2½" x ⅜" F	4⅜"	---	---	<b>50TC475</b>
5"	1"-1½"	8	⅜"	4⅞"	2½" x ⅜" M	3⅞"	---	<b>50501A</b>	---
5"	1¼"-1¾"	8	⅜"	4⅞"	2½" x ⅜" M	5⅜"	---	---	<b>50TC501</b>
5¾"	1¼"-2¼"	6	⅝"	4¾"	3" x ¼" F	5⅜"	---	<b>505752</b>	---
5¾"	1½"-2"	6	⅝"	4¾"	3" x ¼" F	4½"	<b>50MC574</b>	---	---
5¾"	1½"	6	⅝"	4¾"	3" x ¼" F	5"	---	---	<b>50TC576</b>
5¾"	1¾"-2¼"	6	⅝"	4¾"	3" x ¼" F	6½"	---	---	<b>50TC576</b>
7¼"	1¼"-1¾"	6	¾"	6"	3¾" x ¼" F	4⅞"	---	<b>50726A</b>	---
7¼"	2"-2½"	6	¾"	6"	3¾" x ¼" F	5½"	---	<b>50726B</b>	---
7¼"	1¾"-2½"	6	¾"	6"	3¾" x ¼" F	7¾"	---	---	<b>50TC726</b>
9"	2"-3"	8	⅞"	7½"	6" x ¼" F	7¾"	---	---	<b>50TC901</b>
9"	1½"-3"	8	⅞"	7½"	6" x ¼" F	5½"	---	<b>509002</b>	---
10½"	2½"-4"	8	1"	8¾"	5" x ¼" F	6½"	---	<b>501050</b>	---
10½"	2½"-4"	8	1"	8¾"	5" x ¼" F	8"	---	---	<b>50TC1050</b>

## Volvo Penta

Flange Diameter	Shaft Range	# of Bolts	Bolt Size	Bolt Circle	Pilot	Overall Length	Solid Part #
3.945"	¾"-1¼"	4	10mm	3.142"	2.366" x ⅜" F	2⅞"	<b>50MVP400</b>

## Transmission Couplers

### Yanmar

Shafting & Accessories

Flange Diameter	Shaft Range	# of Bolts	Bolt Size	Bolt Circle	Pilot	Overall Length	Solid Part #	Split Part #	Taper Part #
4"	¾"-1¼"	4	10mm	3.070"	1.966" x 5/32" M	2"	---	<b>50400YS</b>	---
4"	¾"-1⅜"	4	10mm	0.070"	1.966" x 5/32" M	2¼"	<b>50MCY004</b>	---	---
4¾"	1"-1½"	4	10mm	3.937"	2.556" x 1/8" M	37/16"	---	<b>50500YS</b>	---
4¾"	1"-1¾"	4	10mm	3.937"	2.556" x 1/8" M	2⅜"	<b>50MCY005</b>	---	---

### ZF

Flange Diameter	Shaft Range	# of Bolts	Bolt Size	Bolt Circle	Pilot	Overall Length	Solid Part #	Split Part #	Taper Part #
4¾"	1"-1½"	6	12mm	37/8"	2½" x 3/16" F	3½"	---	<b>50476A</b>	---
4¾"	1½"-2"	6	12mm	37/8"	2½" x 3/16" F	4"	---	<b>50476B</b>	---
4¾"	1¼"-1½"	6	12mm	37/8"	2½" x 3/16" F	3⅝"	<b>50MC4726</b>	---	---
4¾"	1⅜"-1¾"	6	12mm	37/8"	2½" x 3/16" F	4¾"	---	---	<b>50TC476</b>
5¾"	1½"-2"	6	16mm	4¾"	3" x ¼" F	4½"	<b>50MC574</b>	---	---
5¾"	1¼"-2¼"	6	5/8"	4¾"	3" x ¼" F	4¾"	---	<b>505752</b>	---
5¾"	1½"	6	5/8"	4¾"	3" x ¼" F	5"	---	---	<b>50TC576</b>
5¾"	1¾"-2¼"	6	5/8"	4¾"	3" x ¼" F	6½"	---	---	<b>50TC576</b>
6.10"	1¾"-2½"	10	5/8"	4.921"	3.94" x 0.215" F	5"	---	<b>50610B</b>	---
6.10"	2"-2¼"	10	5/8"	4.921"	3.94" x 0.215" F	6½"	---	---	<b>50TC610</b>
6.69"	1¾"-2½"	12	16mm	5.512"	4.530" x 9/32" F	5"	---	<b>50669</b>	---
6.69"	2"	12	16mm	5.512"	4.530" x 9/32" F	6½"	---	---	<b>50TC669</b>
6.69"	2¼"-3"	12	16mm	5.512"	4.530" x 9/32" F	7½"	---	---	<b>50TC669</b>
7.283"	2"-2¼"	12	18mm	6.122"	4.725" x 9/32" F	6½"	---	---	<b>50TC725G</b>
7.283"	2½"-3"	12	18mm	6.122"	4.725" x 9/32" F	7½"	---	---	<b>50TC725G</b>
7¼"	2"-2½"	8	16mm	6"	3¾" x ¼" F	5⅝"	---	<b>50725BZF</b>	---
7¼"	1¾"-2½"	8	16mm	6"	3¾" x ¼" F	7¾"	---	---	<b>50TC72ZF</b>
8.07"	1½"-2¾"	10	18mm	6.693"	5.512" x 9/32" F	5½"	---	<b>50807ZF</b>	---
8.07"	2"-2½"	12	18mm	6.693"	5.512" x 9/32" F	7¾"	---	---	<b>50TC807</b>
10½"	2½"-4"	8	1"	8¾"	5" x ¼" F	6½"	---	<b>501050</b>	---
10½"	2¼"-4"	8	1"	8¾"	5" x ¼" F	8"	---	---	<b>50TC1050</b>

## Transmission Guide

Flange Diameter	Transmission	Model #	Pilot M/F	# of Bolts	Bolt Diameter	Bolt Circle	Solid Part #	Split Part #	Taper Part #
3.410"	Universal	Atomic 4	1.876"/F	3	3/8"	2 3/4"	<b>50MC3500</b>	---	---
3.945"	Volvo Penta	MB10A, MD38, MD7A, MD11C	2.362"/F	4	3/8"	3.49"	<b>50MVP400</b>	---	---
4"	Hurth	HBW5, 10, 20, 50, 100, 125, 125H, 150, 150A, 150V, 220, 250, HSW450D, 250H, 250A	2 1/2"/M	4	3/8"	3 1/4"	<b>50MC004</b>	<b>50401S</b> <b>50400B</b>	---
4"	Borg Warner	70C, 1017, 1023, 2301	2 1/2"/M	4	3/8"	3 1/4"	<b>50MC004</b>	<b>50401S</b> <b>50400B</b>	---
4"	Newage	PRM Delta	2 1/2"/M	4	3/8"	3 1/4"	<b>50MC004</b>	<b>50401S</b> <b>50400B</b>	---
4"	Paragon	HF, HB, RD	2"/M	4	3/8"	3 1/4"	<b>50MC4020</b>	<b>50400S</b> <b>50400A</b>	---
4"	Paragon	P-200, P-300, P-13, PV-300	2 5/8"/M	4	3/8"	3 1/4"	<b>50MC4026</b>	---	---
4"	ZF	ZF5M, 10M, 12M, 12, 15M, 15MA, 15MIV, 25M, 25MA, 30M, 45C, 25, 25A, 45IV	2 1/2"/M	4	3/8"	3 1/4"	<b>50MC004</b>	<b>50401S</b> <b>50400B</b>	---
4 1/2"	Paragon	RA, PV400	2 5/8"/M	4	3/8"	3 3/4"	<b>50MC4526</b>	---	---
4 3/4"	Capitol	5HD200	2 1/2"/F	6	7/16"	3 7/8"	<b>50MC4725</b>	<b>50475A</b> <b>50475B</b>	<b>50TC475</b>
4 3/4"	Twin Disc	MG-502, 502-1	2 1/2"/F	6	7/16"	3 7/8"	<b>50MC4725</b>	<b>50475A</b> <b>50475B</b>	<b>50TC475</b>
4 3/4"	Yanmar	30M30H/G, KVH20, KHIS	2.556/M	4	10mm	3.937"	<b>50MCY005</b>	<b>50500YS</b>	---
4 3/4"	ZF	ZF220A, IRM220A1, IRM220A/V, ZF220V, IRM220V2, IRM225A	2 1/2"/F	6	12mm	3 7/8"	<b>50MC4726</b>	<b>50476A</b> <b>50476B</b>	<b>50TC476</b>
5"	Borg Warner	72C-1017, 1018, 1004, 1005, 1013, 1014, 2001	2 1/2"/M	4	7/16"	4 1/4"	<b>50MC005</b>	<b>50500A</b> <b>50500C</b>	<b>50TC500</b>
5"	Hurth	HS25A, HS45A, HS63IV, HSW630A, 630H, 630V, 880D, 450A2, 630D, 630A1, 630H1, 630V1, 90ATS, 90TS, 90VTS, 110TS, HSW630, 630A, 400, 450, 600, 630	2 1/2"/M	4	7/16"	4 1/4"	<b>50MC005</b>	<b>50500A</b> <b>50500C</b>	<b>50TC500</b>
5"	Newage	PRM 210/160	2 1/2"/M	4	7/16"	4 1/4"	<b>50MC005</b>	<b>50500A</b> <b>50500C</b>	<b>50TC500</b>
5"	Paragon	P-400	2 3/4"/M	4	3/8"	4 1/8"	<b>50MC5027</b>	<b>50500B</b> <b>50500D</b>	---
5"	Twin Disc	5010A, 5011A	2 1/2"/M	8	7/16"	4 1/8"	---	<b>50501A</b>	---
5"	Volvo Penta	MS, MS3, MS4A, MV2	2 1/2"/M	4	7/16"	4 1/4"	<b>50MC005</b>	<b>50500A</b> <b>50500C</b>	<b>50TC500</b>
5"	ZF	ZF88C, 45A, 63A, 63C, 90ATS, 90TS, 110TS, IRM41A2, 50A2, 50V2, 50V3, 501, 50A2/K3, 50V2/3LD	2 1/2"/M	4	7/16"	4 1/4"	<b>50MC005</b>	<b>50500A</b> <b>50500C</b>	<b>50TC500</b>
5 3/4"	Allison	n/a	3"/F	6	1/2"	4 3/4"	<b>50MC573</b>	<b>505751</b>	<b>50TC575</b>
5 3/4"	Borg Warner	n/a	3"/F	6	1/2"	4 3/4"	<b>50MC573</b>	<b>505751</b>	<b>50TC575</b>
5 3/4"	Capitol	2H3/4HE-10200, E/4H3-11200, M105, M125	3"/F	6	1/2"	4 3/4"	<b>50MC573</b>	<b>505751</b>	<b>50TC575</b>
5 3/4"	Hurth	HSW800A, 800V, 800VI, 110VTS	3"/F	6	1/2"	4 3/4"	<b>50MC573</b>	<b>505751</b>	<b>50TC575</b>
5 3/4"	Hurth	HSW800A2, 800A3, 110ATS	3"/F	6	5/8"	4 3/4"	<b>50MC574</b>	<b>505752</b>	---
5 3/4"	Newage	PRM302, 310, 401, 402, 500D, 601, 601A	3"/F	6	1/2"	4 3/4"	<b>50MC573</b>	<b>505751</b>	<b>50TC575</b>
5 3/4"	Twin Disc	MG506, 5061A, 5062V, 507, 5050, 5050A, 5050V, 5061, 506-1, 506A, 507-2, 507-1, 507A-1, 507A-2	3"/F	6	5/8"	4 3/4"	<b>50MC574</b>	<b>505752</b>	<b>50TC576</b>



**Transmission Guide**

**Shafting & Accessories**

Flange Diameter	Transmission	Model #	Pilot M/F	# of Bolts	Bolt Diameter	Bolt Circle	Solid Part #	Split Part #	Taper Part #
5¾"	ZF	IRM,301, 220V/LD, ZF80IV, 85IV, 110IVTS, 220IV	3"/F	6	½"	4¾"	<b>50MC573</b>	<b>505751</b>	<b>50TC575</b>
5¾"	ZF	IRM220PL, 280A, 280V-LD-1, 300VTS, 301A-1, 301A-2,30, PL- 301PL-2, ZF80A, 85A, 110ATS, 220, 2801, 2801A, 280IV, 280A, 285A, 285IV, 286A, 286IV, 3001TS, 3001ATS, 300IVTS, 301A, 301C	3"/F	6	⅝"	4¾"	<b>50MC574</b>	<b>505752</b>	<b>50TC576</b>
6.10"	ZF	ZF3051, 305A, 3051A	3.94"/F	10	16mm	4.921"	---	<b>50610B</b>	<b>50TC610</b>
6.69"	ZF	ZF325ATS, 325IV, 325IVTS, 325TS, 3251, 3251A, IRM325A, 165PL	4.528"/F	12	16mm	5.512"	---	<b>50669</b>	<b>50TC669</b>
7¼"	Allison	M	3¾"/F	6	⅝"	6"	---	<b>50725A</b> <b>50725B</b>	<b>50TC725</b>
7¼"	Allison	M	3¾"/F	6	¾"	6"	---	<b>50726A</b> <b>50726B</b>	<b>50TC726</b>
7¼"	Capitol	4HE10700, 11700, HY22000, 24000, HY2500, HY6900	3¾"/F	6	⅝"	6"	---	<b>50725A</b> <b>50725B</b>	<b>50TC725</b>
7¼"	Capitol	D5072	3¾"/F	6	¾"	6"	---	<b>50726A</b> <b>50726B</b>	<b>50TC726</b>
7¼"	Newage	PRM60, 601, 601A	3¾"/F	6	⅝"	6"	---	<b>50725A</b> <b>50725B</b>	<b>50TC725</b>
7¼"	Twin Disc	MG506, 5065A, 507, 507-1, 507-2, 507A-1, 507A-2, 5075, 5075A, 5075IV, 5085, 509, 509-1SC, 508-1, 509-1, 5091V, 509-1SC, 5090A	3¾"/F	6	¾"	6"	---	<b>50726A</b> <b>50726B</b>	<b>50TC726</b>
7¼"	ZF	IRM310AL, V250M	3¾"/F	6	16mm	6"	---	<b>50725A</b> <b>50725B</b>	<b>50TC725</b>
7¼"	ZF	IRM302VLD1, 302V/6, 304A, 310A, 310PL, 311A, 311A-1, 311PL, 312TS, V250M, ZF302IV, 304A, 304C, 311A, 312TS	3¾"/F	8	16mm	6"	---	<b>50725BZF</b>	<b>50TC72ZF</b>
7.28"	ZF	BW190, 195, 195P, 2000A, 2060A, ZF2000, 2000A, ZF2000V, 2050, 2050A, 2050V, 2060, 2060A, 2060V, 2070, 2070V, 2150, 2150A, 2150V,	4.725"/F	12	18mm	6.122"	---	---	<b>50TC725G</b>
8.07"	ZF	BW155, 155A, 155ATS, 155TS, 155V, IRM311PL, 320, 320A, 350A, 350A-2, 350AL/PL, 350ATS, 350PL-2, 350TS, 350V-LD-1,350V, ZF311, ZF350, 350A, 350ATS, 350IV, 350TS, 350V, 500A, 500IV, 510A, 550, 550A, 550ATS, 550TS, 665, 665A, 665ATS, 665TS, 665V,	5.511"/F	10	18mm	6.692"	---	<b>50807ZF</b>	<b>50TC807</b>
9"	Allison	M20	6"/F	8	¾"	7½"	---	<b>509001</b>	<b>50TC900</b>
9"	Allison	MH, 15R-L	6"/F	8	⅞"	7½"	---	<b>509002</b>	<b>50TC901</b>
9"	Twin Disc	MG510A, 5111A, DD511, 510, 5111SC, 5114A, 5135A	6"/F	8	⅞"	7½"	---	<b>509002</b>	<b>50TC901</b>
9"	ZF	IRM320AL	6"/F	8	⅞"	7½"	---	<b>509002</b>	<b>50TC901</b>
10½"	Twin Disc	MG509, 512, 513, 514, 514C	5"/F	8	1"	8¾"	---	<b>501050</b>	<b>50TC1050</b>
10½"	ZF	IRM320LAV	5"/F	8	1"	8¾"	---	<b>501050</b>	<b>50TC1050</b>